

Guidelines

v for drawings to be issued in the Construction Documents phase, please refer to the Construction Documents section in the drawing set.

a sheet index/general notes/abbreviations page, and a typical toilet page.

CITIZENS RURAL HEALTH CLINIC

ISSUED FOR PERIOD
11.22.2025

NOTE ADDED TO
TITLEBLOCK TO
REFERENCE GENERAL
NOTES FOR ENTIRE
PROJECT

USE LINKED .JPG IMAGE FOR RENDERING INSTEAD
OF 3D LIVE MODEL IMAGE TO KEEP FILE SIZE
DOWN. KEEP IMAGE UP TO DATE PER
DELIVERABLE



JULD BE STYLE

ABBREVIATIONS

BE MINDFUL TO MATCH ABBREVIATIONS USED THROUGHOUT PROJECT WITH THIS LIST

VERTICAL CFS ING TO F	EQUP	EQUIPMENT	MAX	MAXIMUM	SP	SPANNER FLOORING
FRAMING WITH DISABILITIES ACT	EW	ELECTRIC WATER COOLER	MEDR	MEDICAL	SPT	SHEET
GT TABLE	EWIC	ELECTRIC WATER COOLER	MEDS	MEDICINE	SM	SMOOR
VE FINISHED FLOOR	EXP. JT.	EXPANSION JOINT	MFR	MANUFACTURER	SPEC	SPECIFICATION
DRINK	EXST	EXITING	M	MIRROR	SO	SQUARE
BRUSH	EXT	EXTERIOR	MS	MIRROR	SS	STAINLESS STEEL
NONMATE	FA	FIRE ALARM	MISC	MISCELLANEOUS	SSM	SOLID SURFACE MATERIAL
HTFCT	FAP	FIRE ANNUNCIATOR PANEL	MS	MAJORITY OPENING	ST	STONE
D DIMENSION (HANGGOTT)	FD	FLOOR DRAIN	MFD	MOUNTED	STR	STAIRCASE
KG	FE	FIRE EXTINGUISHER	MFL	METAL	STL	STEEL
DING	FEC	FIRE EXTINGUISHER CABINET	N	NORTH	STRUCT	STRUCTURAL
TEN OF	FF	FRESH FLOOR	NC	NOT IN CONTRACT	SUPP	SUPPLEMENT
TEN OF STEEL	FN	FIRE HYDRANT	NTS	NOT TO SCALE	SV	SHEET VINYL
TEN	FHC	FIRE HOSE CABINET	NO	NUMBER	SHP	SPECIALTY WALL PANELS
TYP ROOF	FR	FRESH	OC	ON CENTER	T	TERRAZZO
PCT OR CARPET TILE	FRT	FRESH	OD	OUTSIDE DIAMETER	T	TRANSITION STRIP
NET	FLR	FLOOR	OF	OFFICE	T&G	TONGUE & GROOVE
CH BASIN	FLOR	FLUORESCENT	OFF	OFFICE	TEL	TELEPHONE
CLE CURTAIN TRACK	FPP	FIBERGLASS REINFORCED PLASTIC PANEL	OH	OPPOSITE	THK	THICK
NER GUARD	FT	FOOT = FEET	OP	OVERFLOW PIPE	TL	TILE
TRIG. JOINT	GAL	GALLON	OPG	OPENING	TL3	TILET
TRIG. LINE	GALV	GALVANEZED	OPP	OPPOSITE	TO	TOP OF
	GD	GRASS GRASS	P	PANEL	TOB	TOP OF STEEL
NET	GC	GENERAL CONTRACTOR	PC	PRIVATE CURTAIN	TP	TILET PARTITION
NET	GL	GLASS	PCN	PRINTED CONCRETE	TRM	TRIM
AN OUT	GRD	GROUND	PL	PLASTIC LAMINATE	TS	TACKABLE SURFACE
JOH	GWB	Gypsum WALL BOARD	PLAM	PLASTIC LAMINATE	TYP	TYPICAL
CRETE	GYP	GYPSONUM	PLAS	PLASTER	TZ	TERRAZZO
TRUCKER	HC	HANDBARRER	PLYWD	PLYWOOD	UNPA	UNPAVED
WIN HOLLOWING	HWHD	HORIZONTAL	PS	PAINT	UNO	UNDESIGNATED OVERHANG
TER	HWK	HOLLOW METAL	QR	QUARTZ SURFACE	UTL	UTILITY
BLE	HRZ	HORIZONTAL	R	RIBBER	VCF	VINYL COMPOSITION FLOORING
	HS	HAND RAIL	RAD	RADIUS	VCT	VINYL COMPOSITION TILE
IF FRAMING CASING	HT	HOT TAP	RBB	RUBBER WALL BASE	VER	VERTICAL
ETTES	HW	HAND WASH	SCP	REFLECTED CEILING PANEL	VF	VERIFY IN FIELD
INSTR	HWH	HOT WATER HEATER	SD	ROOF DRAIN	VTS	VENT TERMINATION PIPE
ORATIVE METALS	IB	INSULATION	SEF	SEWER	W	WEST
	IBL	INSULATION	SENF	SEWER	W/O	WITHOUT
IN SPOUT	JAN	JANITOR	REGD	REQUIRED	WB	WOOD BASE
WASHERS	JC	JANITOR'S CLOSET	RESL	RESILIENT	WC	WALL COVERING
WIND	JT	JOINT	RF	RUBBER FLOORING	WDC	WATER DROOP
	KP	KICK PLATE	RM	ROOM	WD	WOOD
H	LAV	LAVATORY	RO	ROOF OPENING	WOP	WOODWORK
RY FLOORING	LBR	LIBRARY	RP	REINFORCED	WSP	WATERSTOP
DRINKING DRIVER	LND	LANDSCAPE	RS	RUBBER	WP	WALL PROTECTION
EXTERIOR INSULATED FINISHING SYSTEM	LNS	LANSING	S	SOUTH	WS	WOOD STAIN
AMSON JOINT	LF	LIQUID FLOOR FINISHING	SC	SCURPER	WT	WEIGHT
TRICONS	LFT	LIGHT	SCC	SEALANT CONCRETE	WT	WINDOW TREATMENTS
WATER	LFT	LIGHT	SCHD	SCHEDULE	WV	WOOD VENEER
AGENCY	LWC	LINEAR WOOD COILING	SECT	SECTION	WVP	WELDED WIRE FABRIC
AL	M	MISCELLANEOUS	SF	SQUARE FOOT		

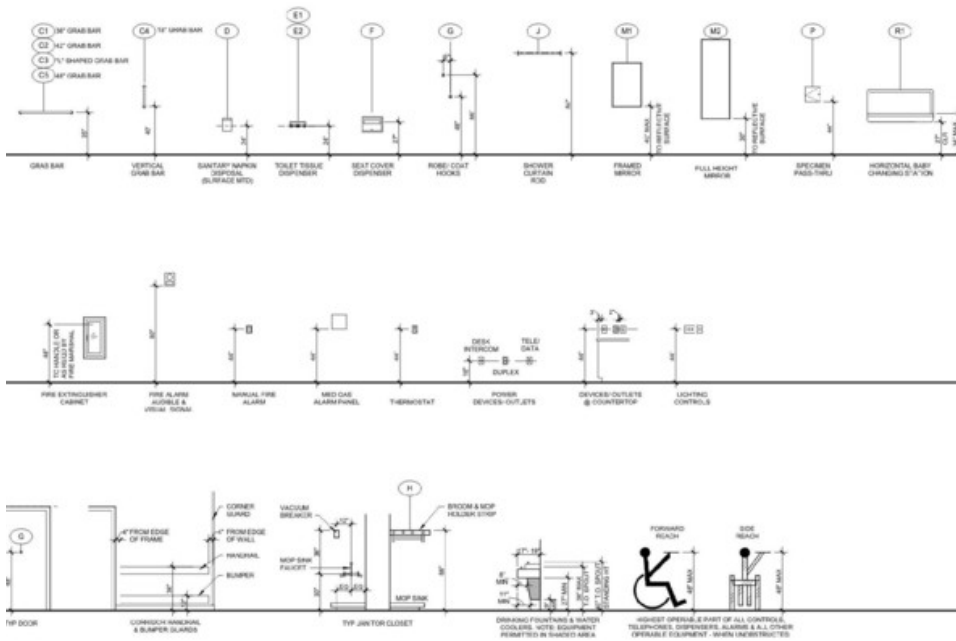
A122	PLAN DETAILS	
A141	OVERALL REFLECTED CEILING PLAN	
A141a	REFLECTED CEILING PLAN - AREA A	
A141b	REFLECTED CEILING PLAN - AREA B	
A142	ENLARGED REFLECTED CEILING PLANS + DETAILS	
A143	ENLARGED REFLECTED CEILING PLAN	
A144	ENLARGED REFLECTED CEILING PLAN	
A151	ROOF PLAN	

GHC STANDARD SHEET NAMING/NUMBERING

ER101a	POWER PLAN - AREA A	
ER101b	POWER PLAN - AREA B	
	PLUMBING	
P001	PLUMBING LEGEND & GENERAL NOTES	
P101a	PLUMBING PLAN - AREA A	
P101b	PLUMBING PLAN - AREA B	
P121	PLUMBING & FIRE PROTECTION DETAILS	
P131	PLUMBING SCHEDULES & RISER DIAGRAMS	

	FIRE PROTECTION	
FP101	FIRE PROTECTION PLAN	
	METAL SIGNAGE	
T02	METAL SIGNAGE DRAWINGS	

SPECIALTY EQUIPMENT AND MOUNTING HEIGHTS



TYP. TOILET FIXTURE LAYOUTS

T1 SYMBOL INDICATES TOILET LAYOUT TYPE U1 SYMBOL INDICATES URINAL LAYOUT TYPE EW SYMBOL INDICATES ELECT WATER COOLER LAYOUT TYPE

NOTE: REFER TO PLUMBING SHEETS FOR FIXTURE DESIGNATIONS

SPECIALTY EQUIPMENT GENERAL

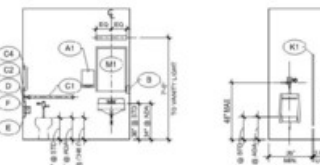
- THIS SCHEDULE IS SHOWN AS A STANDARD TEMPLATE. ALL ITEMS MAY NOT BE USED ON THE PROJECTS OR THIS PROJECT DOES NOT COMPLY WITH THE STANDARDS ABOVE. BRING TO ARCHITECT BEFORE INSTALLATION OF THE ITEM.
- DIMENSIONS ARE TYP. UNLESS NOTED OTHERWISE. DIMENSIONS DO NOT NECESSARILY SHOW LOCATIONS ON THE WALLS.
- PROVIDE ADEQUATE BLOCKING AT ALL ACCESSORY & EQUIPMENT LOCATIONS.
- ALL TOILET ACCESSORIES TO BE INSTALLED BY GC UNLESS NOTED OTHERWISE. GC TO COORD FINISHES/ TRIMS.
- SEE PLANS FOR ALL ADDITIONAL TOILET ACCESSORIES & ACTUAL ROOM DIMENSIONS.
- ALL TOILET ACCESSORIES TO BE INSTALLED PER MANUFACTURER'S WRITTEN INSTRUCTIONS.
- REFER TO D SERIES FOR ALL TOILET WALL FINISHES.

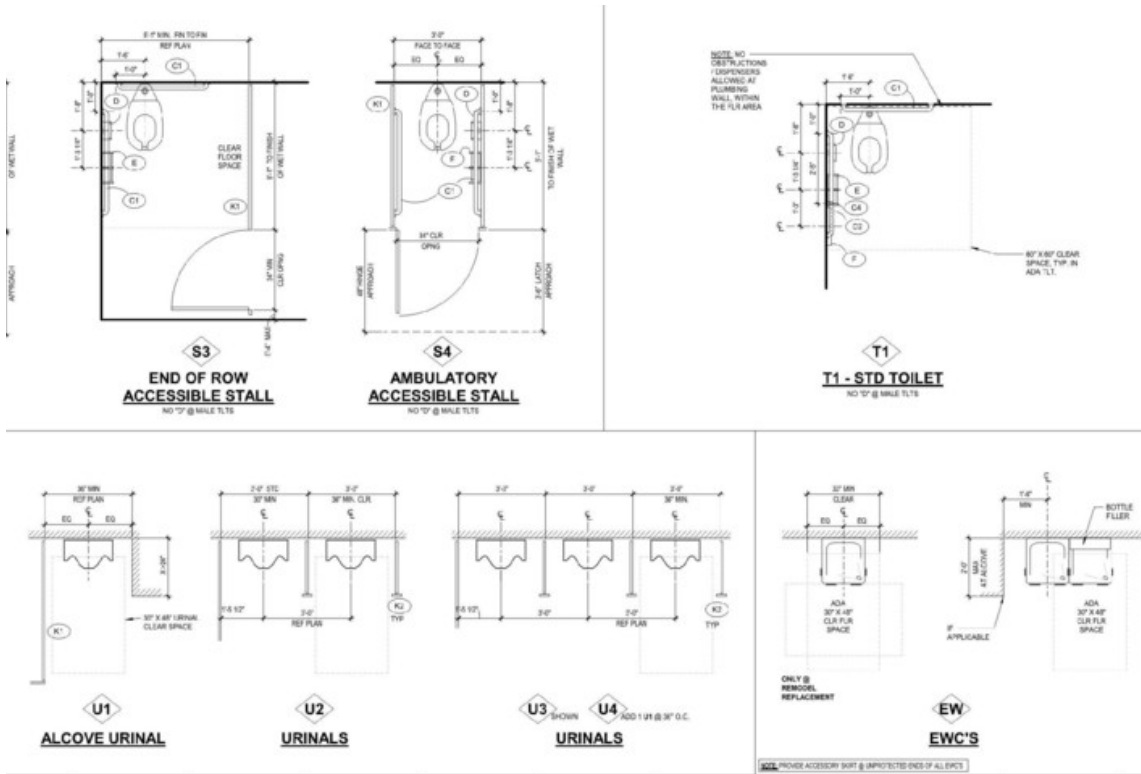
SPECIALTY EQUIPMENT SCHEDULE

MARK	DESCRIPTION	MODEL NUMBER	REMARKS
A1	FIRE EXTINGUISHER CABINET	RESEARCH	CONTRACT SERIES
B1	FIRE ALARM PULL STATION	RESEARCH	CONTRACT SERIES
C1	MANUAL FIRE ALARM	RESEARCH	CONTRACT SERIES
D1	MED GAS ALARM PANEL	RESEARCH	CONTRACT SERIES
E1	TERMOSTAT	RESEARCH	CONTRACT SERIES
F1	POWER DEVICES OUTLET	RESEARCH	CONTRACT SERIES
G1	DEVICES OUTLET & GROUNDSTRIP	RESEARCH	CONTRACT SERIES
H1	LIGHTING CONTROLS	RESEARCH	CONTRACT SERIES
I1	TP DOOR	RESEARCH	CONTRACT SERIES
J1	CORNER GUARD	RESEARCH	CONTRACT SERIES
K1	VACUUM BREAKER	RESEARCH	CONTRACT SERIES
L1	BROOM & MOP HOLDER STOP	RESEARCH	CONTRACT SERIES
M1	DRINKING FOUNTAIN	RESEARCH	CONTRACT SERIES
N1	FORWARD REACH	RESEARCH	CONTRACT SERIES
O1	SIDE REACH	RESEARCH	CONTRACT SERIES

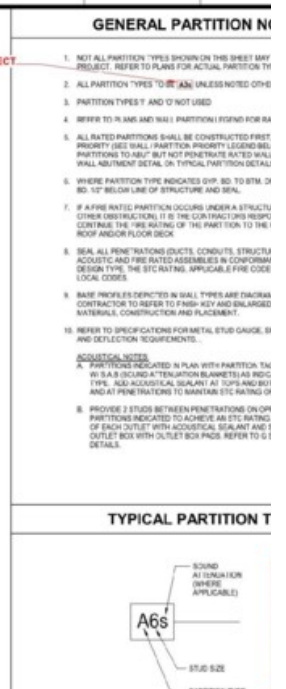
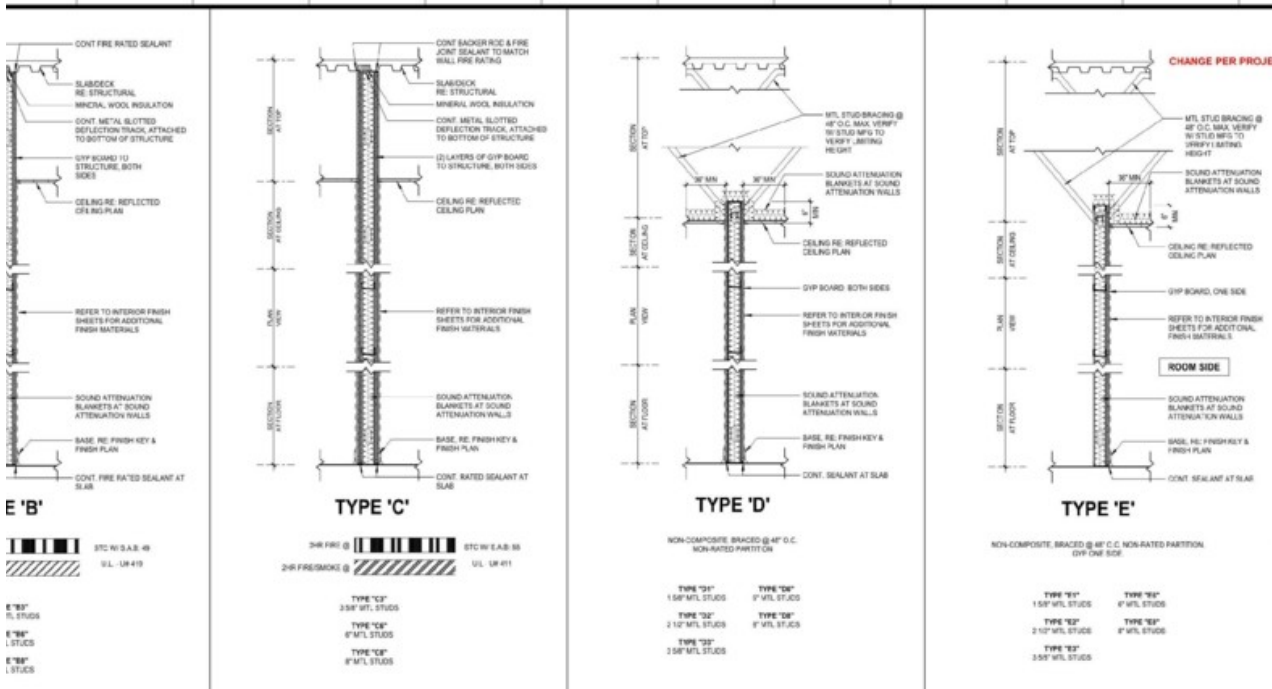
THESE ACCESSORIES ARE THE BASIS OF DESIGN. THEY SHOULD BE REVIEWED AND CHANGED ACCORDINGLY PER PROJECT

TYP. FIXTURE MOUNTING HEIGHT D





all wall types for the project should be fully documented per the drawing standards. Verify all walls to meet "G003" and update as needed. Also include the typical partition details page.



ATTENUATION

E '95a' 1/2" MTL STUDS

E '95b' 1/2" MTL STUDS

E '95c' 1/2" MTL STUDS

RE SOUND ATTENUATION

TYPE 'EM' 3/8" MTL STUDS

TYPE 'EM' 1/2" MTL STUDS

TYPE 'EM' 1/2" MTL STUDS

RE SOUND ATTENUATION

TYPE 'EM' 3/8" MTL STUDS

TYPE 'EM' 1/2" MTL STUDS

TYPE 'EM' 1/2" MTL STUDS

RE SOUND ATTENUATION

TYPE 'EM' 3/8" MTL STUDS

TYPE 'EM' 1/2" MTL STUDS

TYPE 'EM' 1/2" MTL STUDS

WALL PARTITION / PRIORITY

PRIORITY ORDER OF CONSTRUCT

*REFER TO WALL RESTRAINT DETAIL AND PARTITIONS @ DETAILS ON TYPICAL FIRST FLOOR/SECOND FLOOR/ROOF

TWO HOUR FIRE RIBBON BARRIER

TWO HOUR FIRE RATED BARRIER

ONE HOUR FIRE RATED BARRIER

ONE HOUR FIRE RATED BARRIER

SMOKE PARTITION

NONRATED PARTITION

QHC NOTES (REMOVE THESE NOTES BEFORE)

1. ADD OR REMOVE PARTITION TYPES PER PH REQUIREMENTS.
2. PARTITION TYPE VIEWS CAN BE FOUND IN BROWSER UNDER "VIEWS" OR SHEETS, SO GET INFORMATION IN THE PROJECT BROWSER.
3. ADD SECOND PARTITION SHEET IF NEEDED ADDITIONAL ROOM.
4. PARTITION TYPE DESIGNATIONS "A" - "J" A UNCHANGED AS FIRM STANDARDS.

E 'G'

ON-RATED PARTITION RE SIDE

TYPE '95P' 1/2" MTL STUDS

TYPE '95P' 1/2" MTL STUDS

TYPE '95P' 1/2" MTL STUDS

ATTENUATION

E '95a' 1/2" MTL STUDS

E '95b' 1/2" MTL STUDS

E '95c' 1/2" MTL STUDS

TYPE 'H'

SMOKE PARTITION

TYPE '96P' 1 1/2" MTL STUDS

TYPE '96P' 1 1/2" MTL STUDS

TYPE '96P' 2 1/2" MTL STUDS

TYPE '96P' 3 1/2" MTL STUDS

RE SOUND ATTENUATION

TYPE '96M' 1 1/2" MTL STUDS

TYPE '96M' 1 1/2" MTL STUDS

TYPE '96M' 1 1/2" MTL STUDS

TYPE 'J'

1HR FIRE @

1HR FIRE/SMOKE @

TYPE '97P' 2 1/2" MTL STUDS

TYPE '97P' 1/2" MTL STUDS

TYPE '97P' 1/2" MTL STUDS

TYPE '97P' 1/2" MTL STUDS

STD W/ 3 A.B. 3R @ 4

UL DESIGN NO. U415

TYPE 'K'

TYPE '98P' 1/2" CMU BLOCK

1. RATED WALL ABUTTING EXTERIOR WALL DTL

1/2"

3. GYP BD CONTROL JOINT DETAIL

1/2" x 1/2"

NOTE: PROVIDE GYP BD CONTROL JOINTS AT 36" OC MAXIMUM DIRECTION. REFER TO PARTITION TYPES FOR TYPICAL WALL CONSTRUCTION. PROVIDE CONTROL JOINTS AT BOTH SIDES OF DOOR FRAME TYPICAL LAND.

4. FLOOR ABUTMENT DETAILS

1/2" x 1/2"

5. WALL ABUTMENT DETAILS

1/2" x 1/2"

WALL PRIORITY LEGEND	
3 HR FIRE & SMOKE WALL	PRIORITY 1 (HIGHEST)
2 HR FIRE WALL	PRIORITY 2
3 HR SHMWT WALL	PRIORITY 2
1 HR FIRE & SMOKE WALL	PRIORITY 3
1 HR FIRE WALL	PRIORITY 4
NON-RATED WALL	PRIORITY 5 (LOWEST)

FIRE ANCHOR SMOKE WALL PENETRATIONS

PLASTER OR WALL, CONCRETE, OR ANCHORED TYPICAL SEALS AS FOLLOWS: LESS THAN 12" - ACOUSTIC CAULK OR DRYTAC JOINT COMPOUND (NOT TAPE)

MORE THAN 12" - BLOW-OUT PATCH OR PROPRIETARY SYSTEM

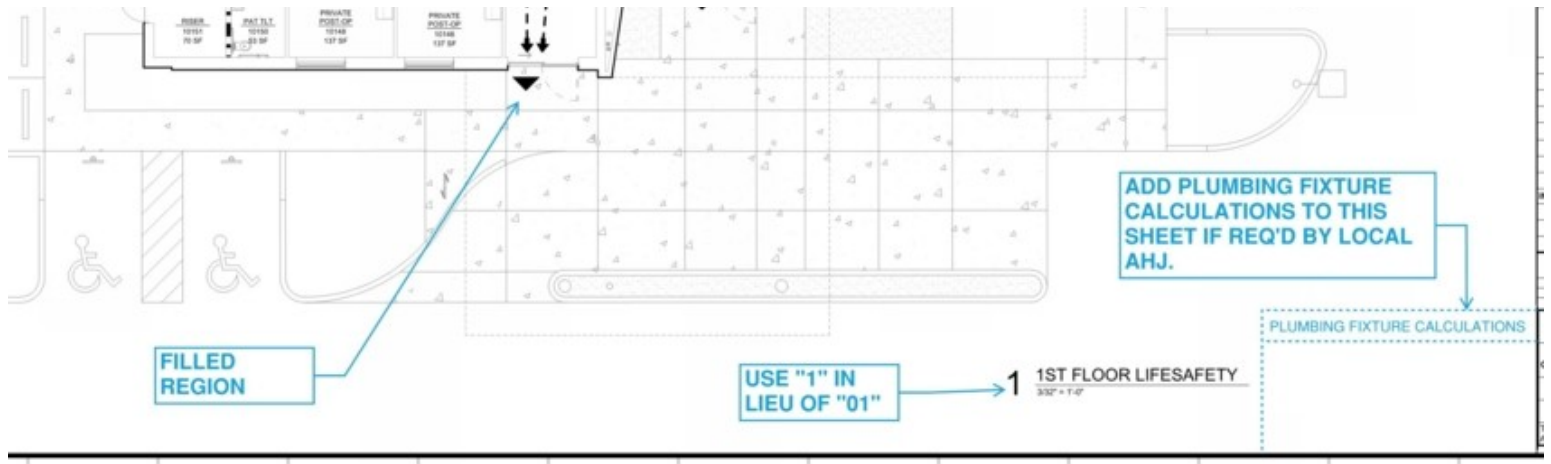
PIPE PENETRATIONS

PIPES AND CONDUITS NOT SUBJECT TO DRYNT OR CONDENSATION

REFER TO PARTITION TYPES FOR WALL CONSTRUCTION

TAPE FINISH AND SEAL ALL PENETRATIONS IN GYP BOARD BEHIND CABINET

IN ALL RATED PARTITIONS AND SMOKE PARTITIONS, THE SURFACE AREA OF INDIVIDUAL METALLIC OUTLET OR SWITCH BODIES SHALL NOT EXCEED 10 SQUARE INCHES. THE AGGREGATE SURFACE AREA OF THE BODIES SHALL NOT EXCEED 100 SQUARE INCHES FOR 100 SQUARE FEET. BODIES WHICH EXCEED THESE STANDARDS SHALL BE RECESSED AS SHOWN IN "RECESSED EQUIPMENT BODIES AND DEVICES" DETAIL. BODIES LOCATED ON OPPOSITE SIDES OF RATED AND/OR SMOKE PARTITIONS SHALL BE SEPARATED BY HORIZONTAL DISTANCE OF 24 INCHES MINIMUM.



ent Deliverables & Guidelines, the site and landscaping information shown on the architectural drawing is the responsibility of the architect and not the civil engineering consultant. Ensure that coordination between the other affected disciplines occurs early enough in the design process to allow for any necessary changes to be made. Show curbs as heavier lineweight.

es, and setbacks.

model shows.

building squarefootage. Locate note in building footprint.

or neighborhood elements.

access aisles where appropriate.

th Electrical. Ensure locations are dimensioned. Verify with Electrical and Structural who is providing the information. Make sure all dimensions are clearly labeled and readable.

gs should be on separate workset from rest of Revit model. Hide any modelled site elements in the architectural model (which is hidden during CDs).

n site plan if possible.

VERIFY NOTES ARE PROJECT SPEC
ADD ADDITIONAL NOTES AS NEE
RIGHT JUSTIFY AT TOP OF DRAWING

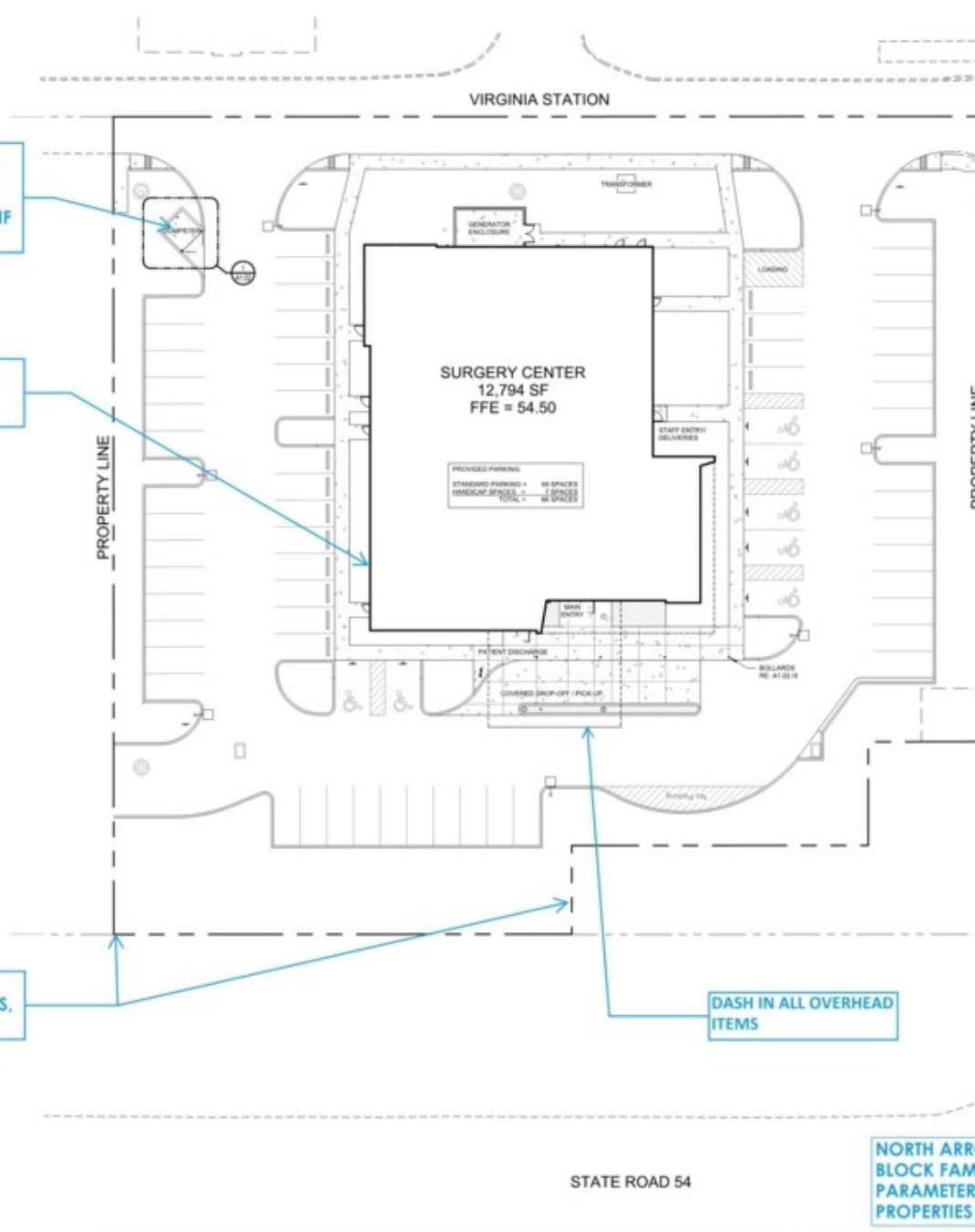
TE
.**

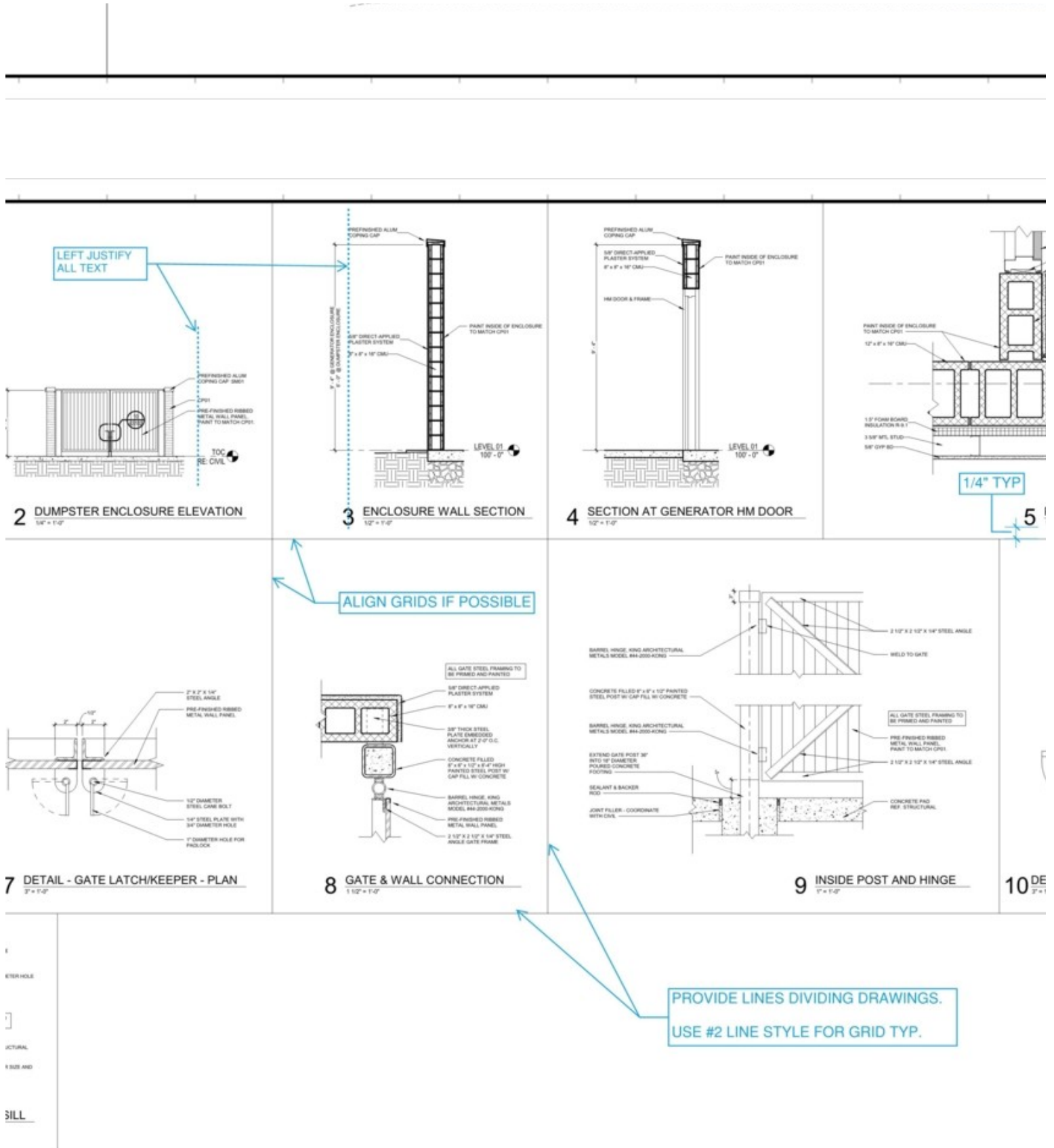
PROVIDE ENLARGED PLAN
CALLOUT FOR DUMPSTER
ENCLOSURE AND
GENERATOR ENCLOSURE (IF
APPLICABLE)

USE BUILDING EDGE
OUTLINE, NOT ROOF
OUTLINE.

SHOW SETBACKS,
EASMENTS, PROPERTY LINES,
ETC.

DASH IN ALL OVERHEAD
ITEMS





ument floor plans are listed below:

should start at 1/8" = 1'-0" and adjusted if the project size is better suited for a different scale or sepa

, doors, walls, equipment, etc.) and consistently aligned or spaced (typically offset 1/8" from tagged c
ed out as an enlarged plans does not need to be tagged on the overall plan.

ral grids, exterior fenestration, and interior partitions ensuring that dimensions are legible and not ove
n consistent locations on walls or other elements (left face of stud, right face of stud, centerline of wa

ments.

section markers appear on the drawing.

NOTES ARE PROJECT SPECIFIC. ADD ALL NOTES AS NEEDED. IDENTIFY AT TOP OF DRAWING.

LAYOUT WHEN BUILDING LINES NOT ALLOW FOR VERTICAL

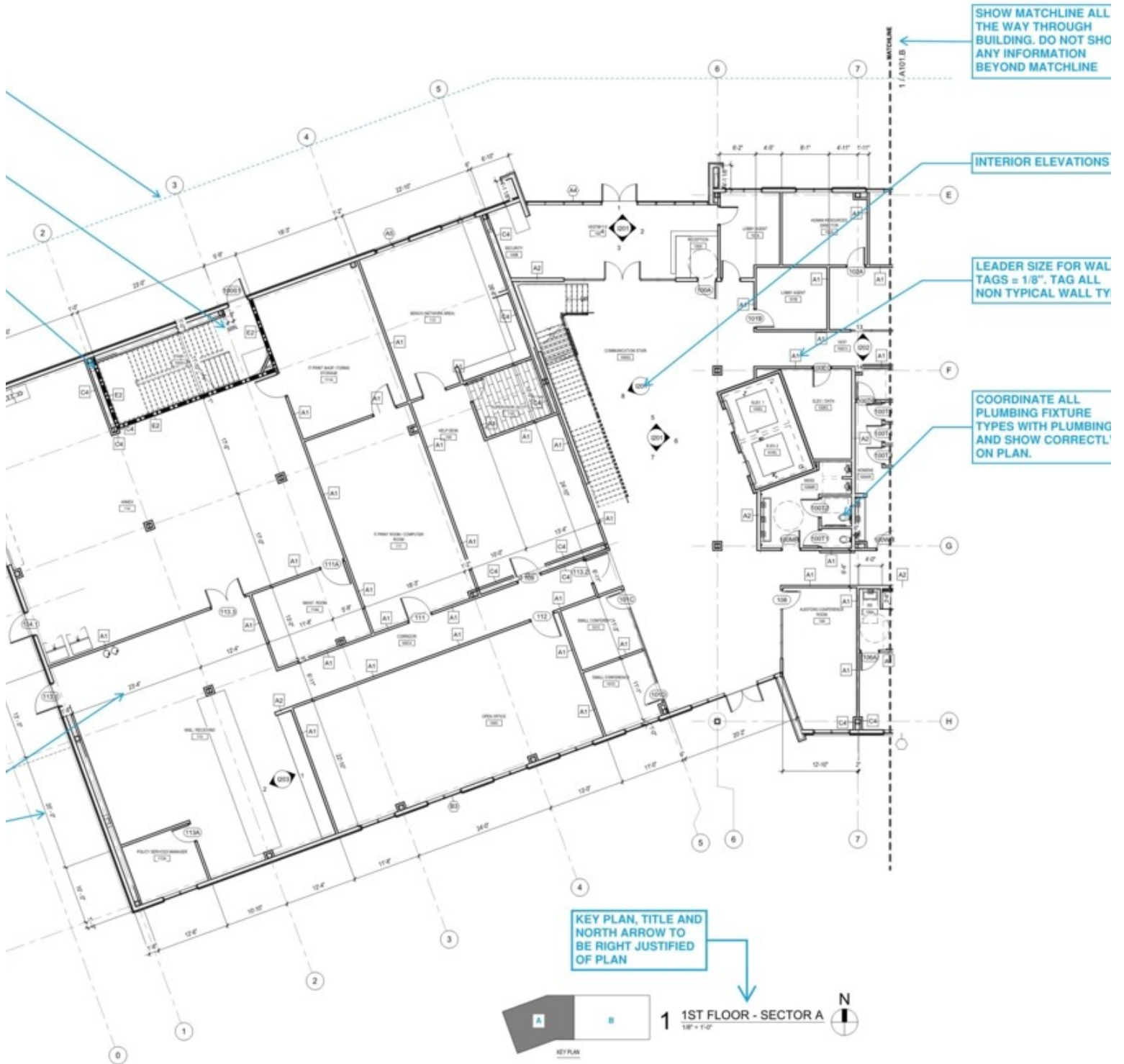
ADJUST ALL NOTES, REFERENCES AND LEGEND ITEMS EACH SPECIFIC PROJECT.

GENERAL NOTES

- 1 ALL PARTITIONS TO BE TYPE **XXX** UNLESS NOTED OTHERWISE ON PLAN.
- 2 ALL STEEL COLUMNS TO BE PERIODICALLY USING TYPE **XXX** PARTITIONS UNLESS NOTED OTHERWISE ON PLAN. BRACE PARTITIONS VERTICALLY AS REQUIRED.
- 3 ALL FINISHES ARE FROM THE EXTERIOR FACE OF THE BUILDING TO COLUMN CENTER LINE TO FACE OF GYP RD EXCLUDING INTERIOR FINISHES UNLESS NOTED OTHERWISE ON PLAN.
- 4 ALL DOOR NUMBERS ARE THE SAME AS THE ROOM NUMBER THAT THE DOOR OPENS INTO UNLESS NOTED OTHERWISE ON PLAN. IN ROOMS WITH MORE THAN ONE (1) DOOR SWINGING INTO IT, THE ROOMS WILL BE DESIGNATED BY A LETTER A, B, ETC. AT THE END OF THE DOOR NUMBER. THE BUILDING AREA IS EXCLUDED FROM THE DOOR NUMBER PLAN DESIGNATION FOR CLARITY.
- 5 UNLESS OTHERWISE NOTED OTHERWISE ON PLAN, LOCATE THE HINGE FACE OF DOOR FRAMES IF FROM THE FACE OF THE ADJACENT PARTITION AT HINGE-LINES. REFER TO ACCESS FOR TYPICAL DOOR LAYOUT.
- 6 REFER TO SHEET **XXX** FOR TYPICAL PARTITION TYPE AND DETAILS.
- 7 ALL FINISHED STEEL COLUMNS IN HANGING AREA TO BE WRAPPED WITH PREFINISHED ALUM TO MATCH STOREFRONT GLAZ.

FLOOR PLAN LEGEND

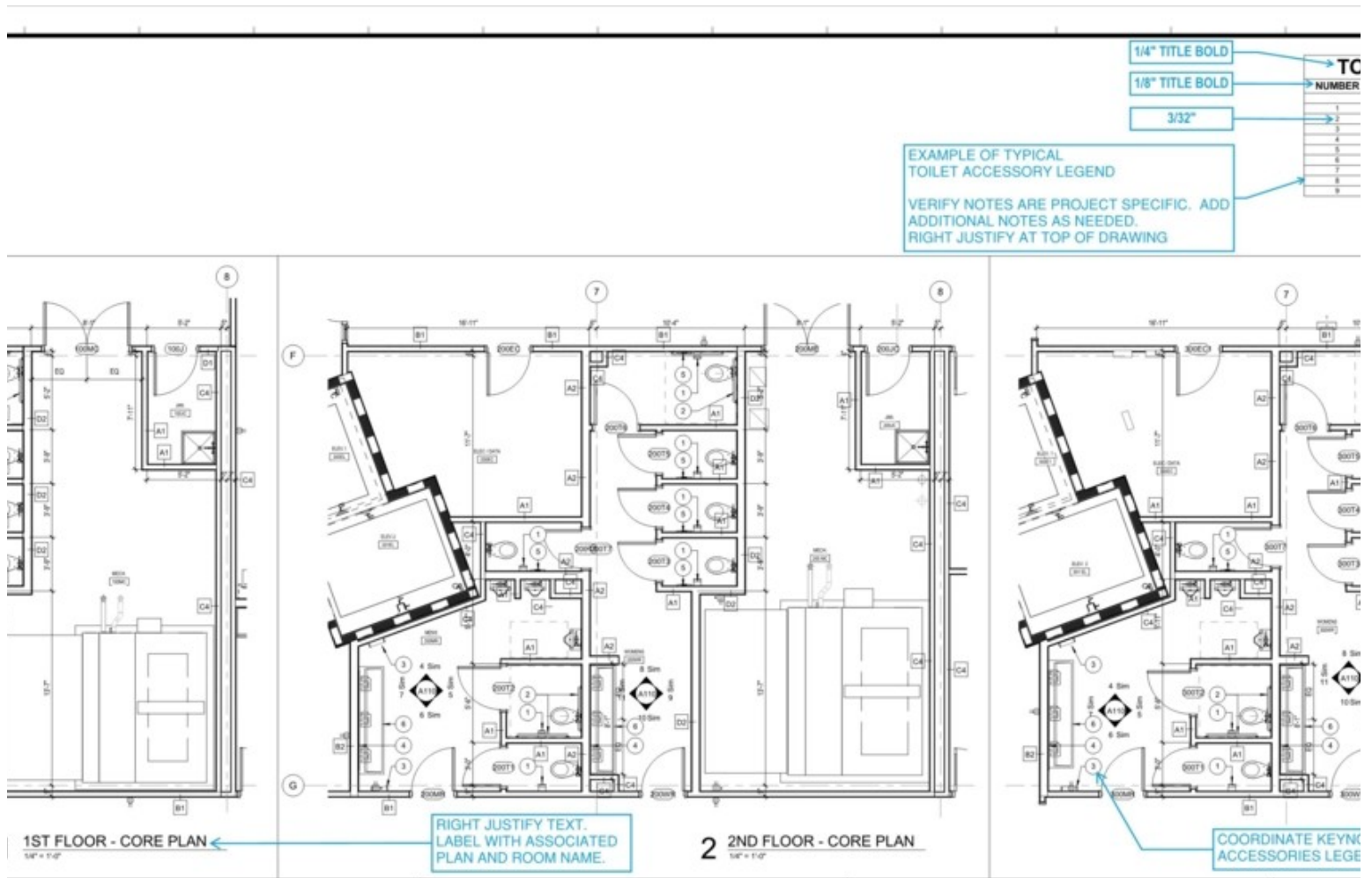
- PARTITION TYPES - REF: **XXX**
- HOLLOW METAL FRAMES - REF: **XXX**
- ALUMINUM FRAME TYPES - REF: **XXX**
- FIRE EXTINGUISHER CABINETS - REF SHEET: **XXX** FOR TYPICAL DETAILS
- DOOR NUMBER - REFER TO PROJECT MANUAL AND SHEET **XXX** FOR TYPES
- ACCESSORY TAG - REF SHEET **XXX** FOR ACCESSORY INFORMATION
- KEYNOTE
- ACCESS CONTROL/PUSH PLATE SHOWN FOR REFERENCE
- MACHLINE (LIST OF WORK)



s and smaller spaces should start at 1/4" = 1'-0".

, doors, walls, equipment, etc.) and consistently aligned or spaced (typically offset 1/8" from tagged c
a corresponding legend.

rings. Make sure to add notes such as "CLEAR", "MIN." or "HOLD" for critically dimensioned items. Be
ect code compliance.



pared mainly by the interiors team, but should be verified by the architectural team to ensure all structures are as follows:

the associated floor plans (overall, sector, or enlarged).

changes to ensure that nothing is obscured or hidden.

notes, and section details.

refer from the typical height established in the Reflected Ceiling Plan Notes.

VERIFY NOTES ARE PROJECT SPECIFIC. ADD ADDITIONAL NOTES AS NEEDED. RIGHT JUSTIFY AT TOP OF DRAWING.

USE THIS LAYOUT WHEN BUILDING SHAPE DOES NOT ALLOW FOR VERTICAL NOTES

ADJUST ALL NOTES, REFERENCES AND LEGEND ITEMS TO EACH SPECIFIC PROJECT.

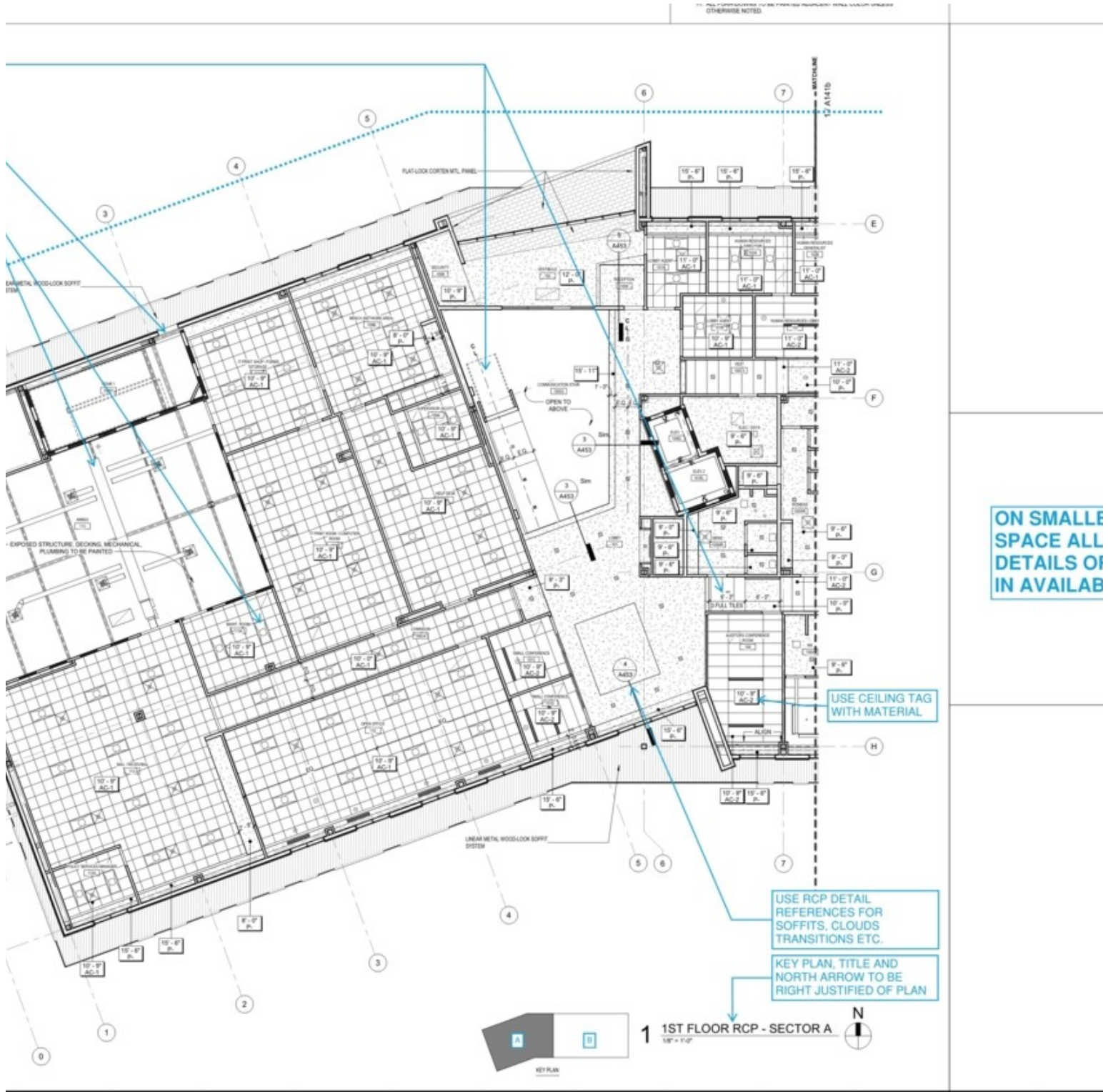
USE GENERAL CEILING NOTES IN LEGEND

REFLECTED CEILING PLAN NOTES

1. CUT ALL PARTIAL ACOUSTICAL CEILING PANELS WITH REGULAR EDGE TO MATCH MANUFACTURER'S EDGE AS REQUIRED.
2. CENTER LIGHT FIXTURES, EXIT LIGHTS, SPRINKLER HEADS, SPEAKERS AND OTHER CEILING MOUNTED FIXTURES IN PANELS.
3. ALL GYPSUM BOARD CEILING SHALL BE 5/8" WITH METAL FURRING @ 16" O.C.
4. DO NOT ATTACH ANY PORTION OF CEILING OR PARTITION SYSTEMS TO OVERHEAD MECHANICAL SYSTEM COMPONENTS. COORDINATE WITH MECHANICAL AND PROVIDE ALTERNATE BRACING OR SUPPORT FOR ANY PARTITION OR CEILING SYSTEM IN CONFLICT WITH DUCTWORK OR MECHANICAL ITEMS.
5. CENTER CEILING GRID IN ROOM IN BOTH DIRECTIONS UNLESS INDICATED OTHERWISE.
6. ALL LIGHT FIXTURES IN GYPSUM BOARD CEILING SHALL BE CENTERED IN ROOM UNLESS INDICATED OTHERWISE.
7. ALL GYPSUM BOARD SOFFITS ARE TO BE FINISHED WITH NO EXPOSED EDGES OR VIEWS INTO THE PLENUM SPACE.
8. ALL CEILING NOTES AS "EXPOSED" OR "NO CEILING" TO BE FINISHED PER RCP, UNLESS NOTED OTHERWISE.
9. ALL CEILING ACCESS PANELS, SPRINKLER HEADS & PLATES SHALL BE PAINTED TO MATCH ADJACENT CEILING.
10. ALL GYPSUM CEILINGS TO BE PAINTED **FLX** UNLESS OTHERWISE NOTED

REFLECTED CEILING FINISH LEGEND

- GYPSUM BOARD CEILING SYSTEM
- AC-1
 - AC-2



ON SMALLER SPACE ALL DETAILS OF IN AVAILAB

USE CEILING TAG WITH MATERIAL

USE RCP DETAIL REFERENCES FOR SOFFITS, CLOUDS TRANSITIONS ETC.

KEY PLAN, TITLE AND NORTH ARROW TO BE RIGHT JUSTIFIED OF PLAN



1 1ST FLOOR RCP - SECTOR A
1/8" = 1'-0"

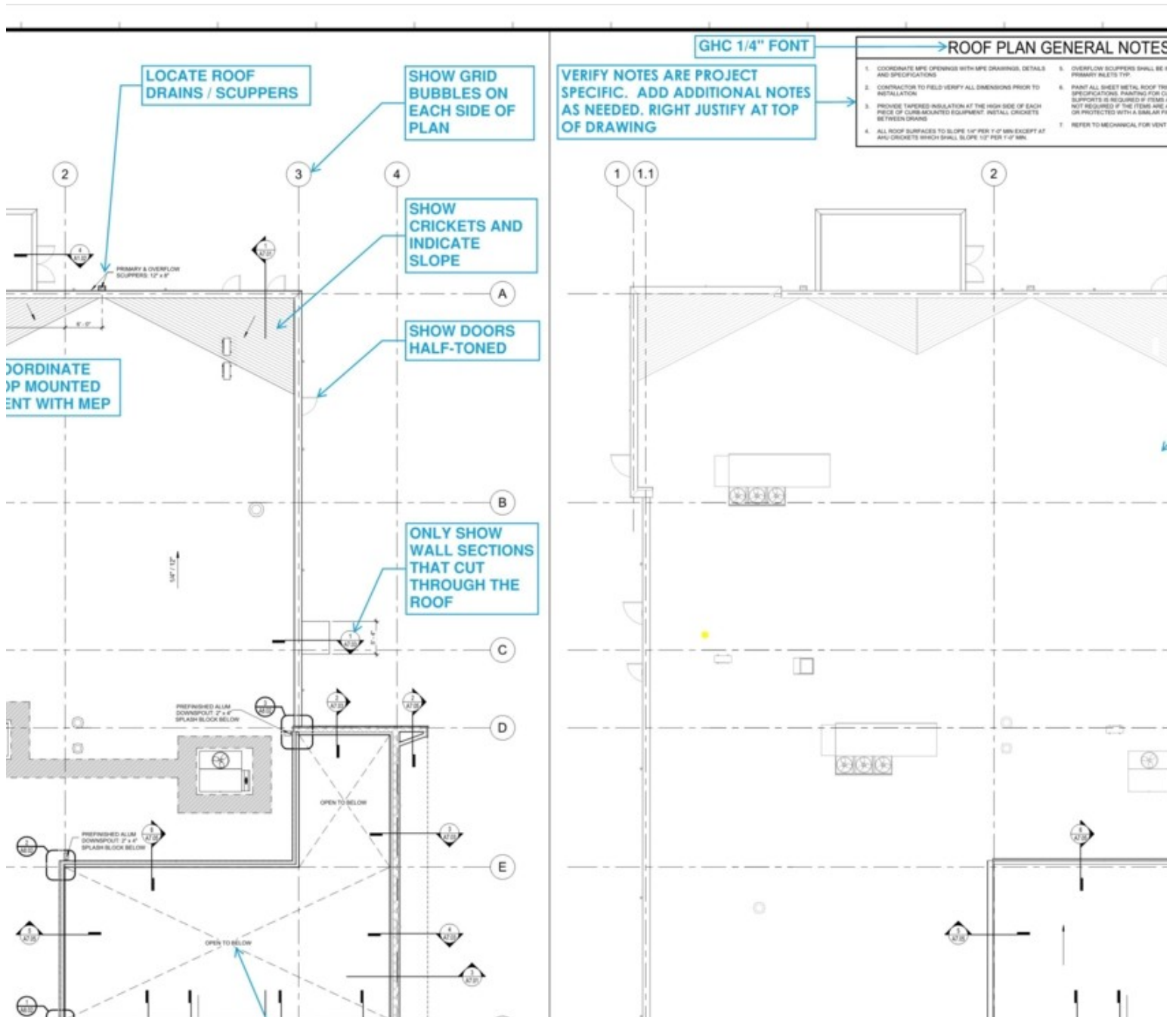


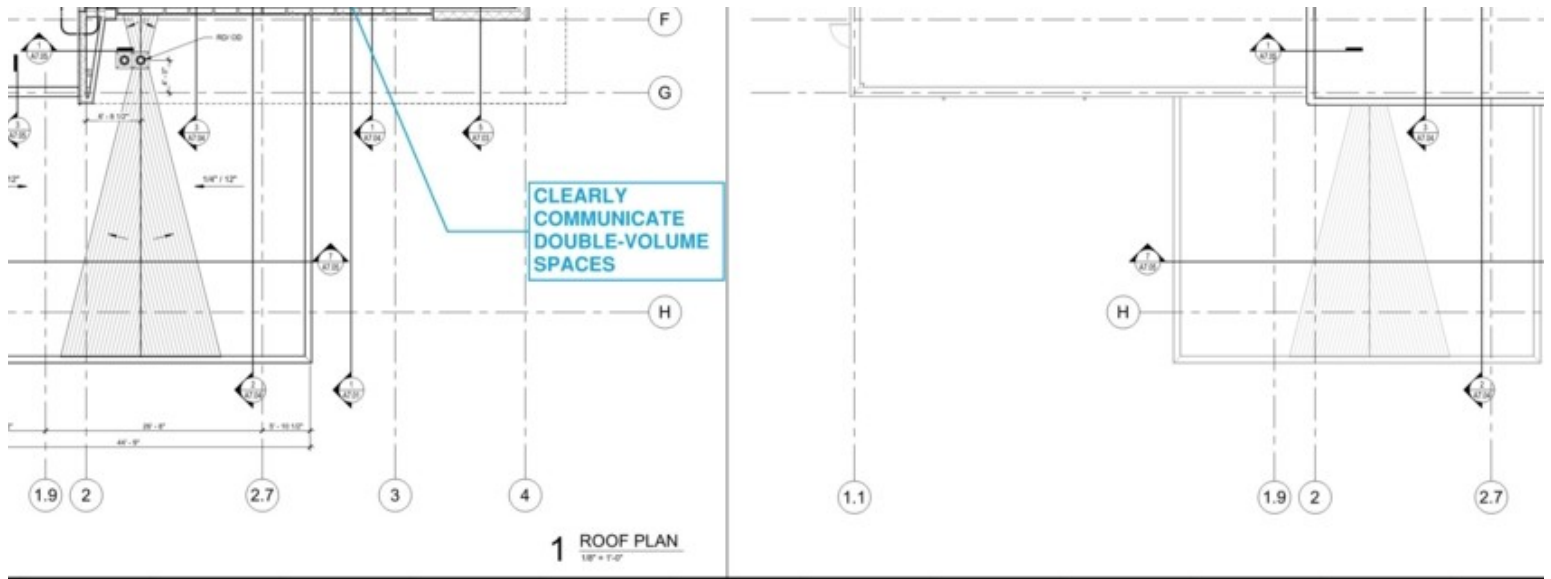
match floor plans and reflected ceiling plans.

ay pads. Include a legend for any hatched items.

rresponding locations.

rn on plan.

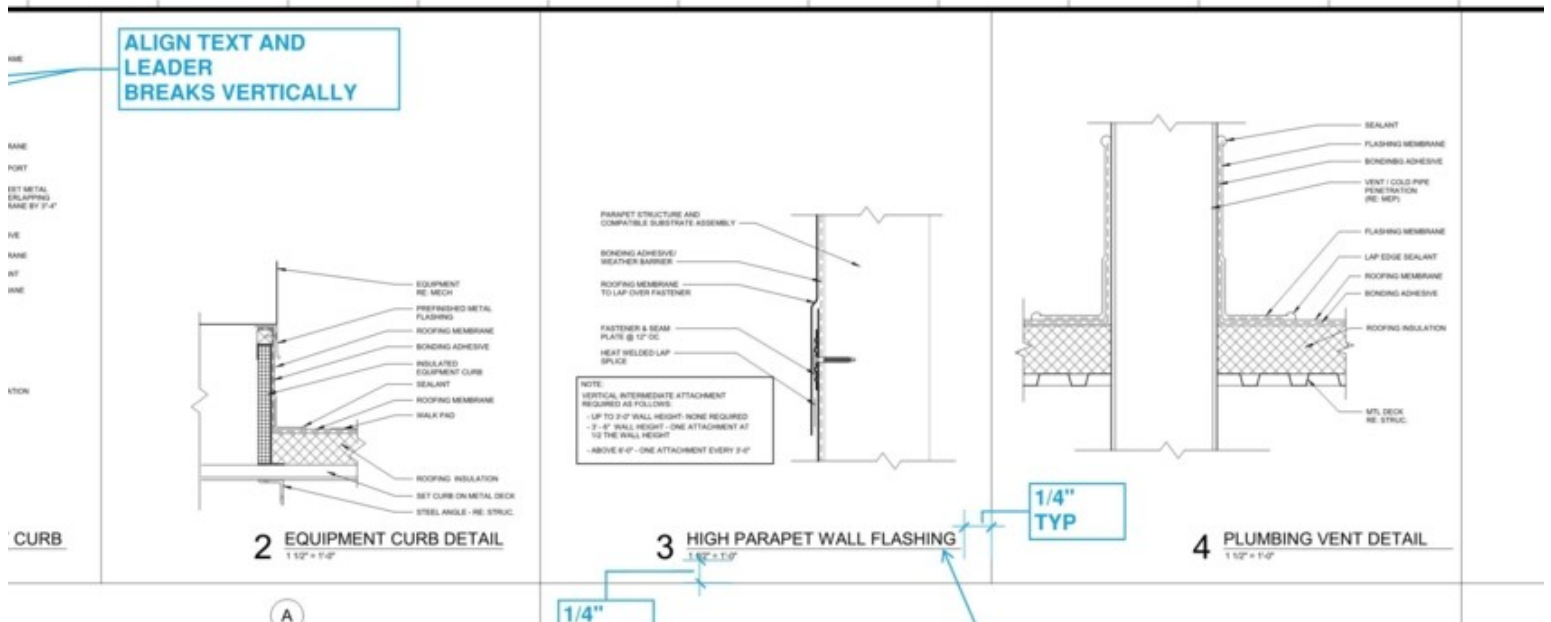


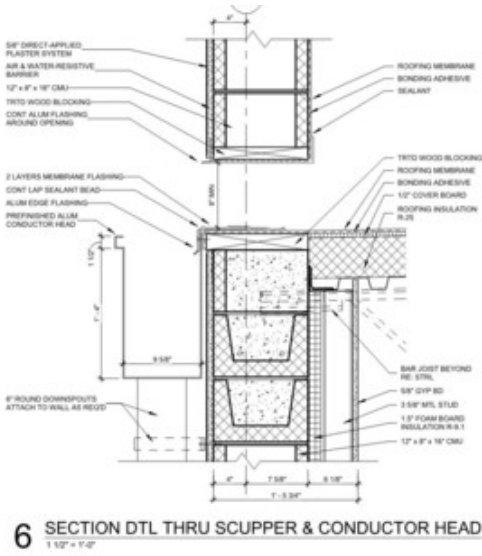


of details not called out from wall sections (usually typical details and special conditions).

d be aligned where possible.

t with drawing scales included throughtout drawing set and is legible when printed.





TYP

RIGHT JUSTIFY TITLE
STOP LINE UNDER
TITLE AT END OF TEXT.

PROVIDE LINES DIVIDING
DRAWINGS.
USE #2 LINE STYLE FOR
GRID TYP.

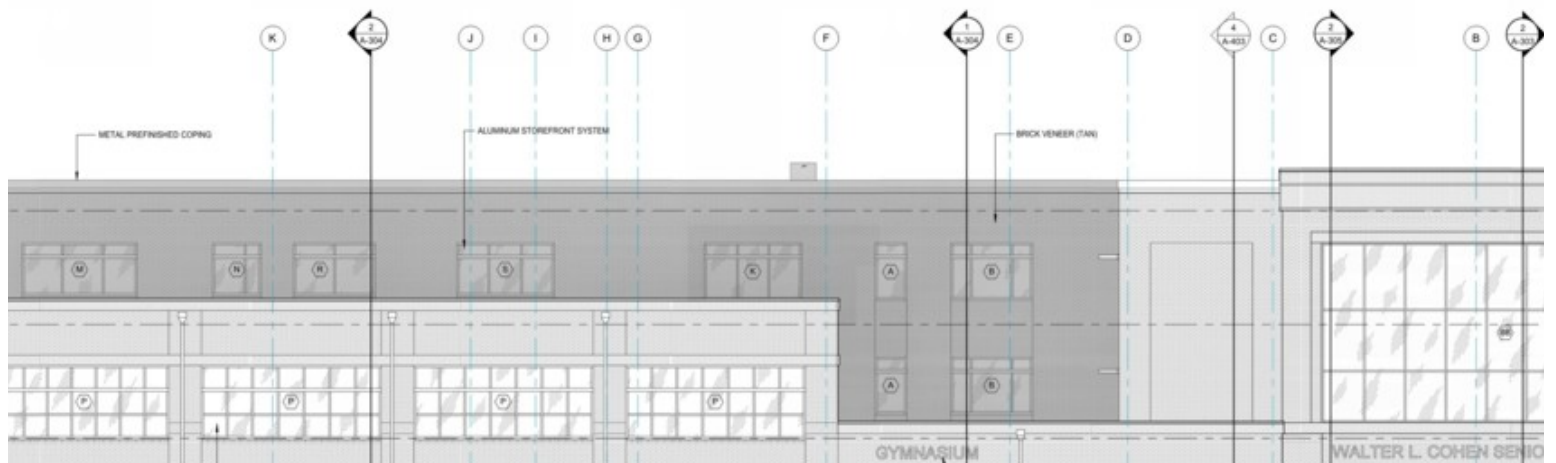
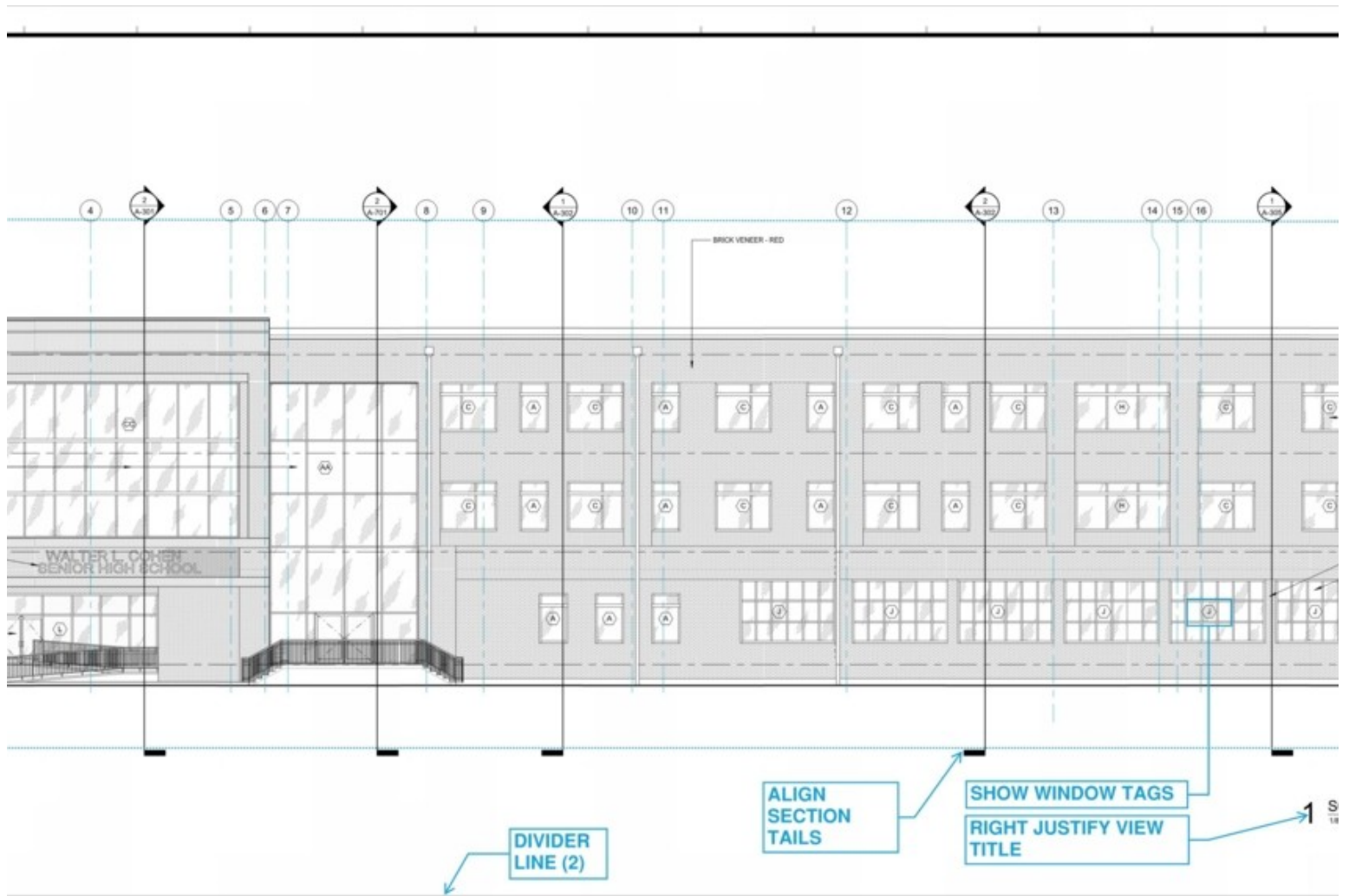
ns are as follows:

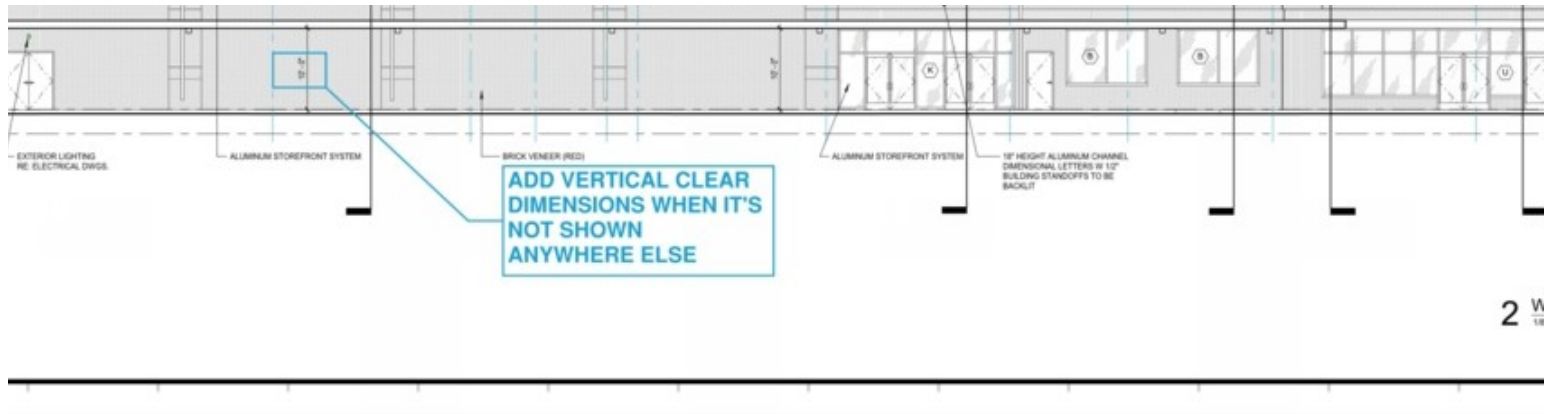
nes in light grey to identify distinct materials.

n Revit to distinguish foreground from background building masses or light shadowing not to exceed

critical, mechanical, plumbing, etc. and include relevant notes to identify such items.

S.





2 W
18

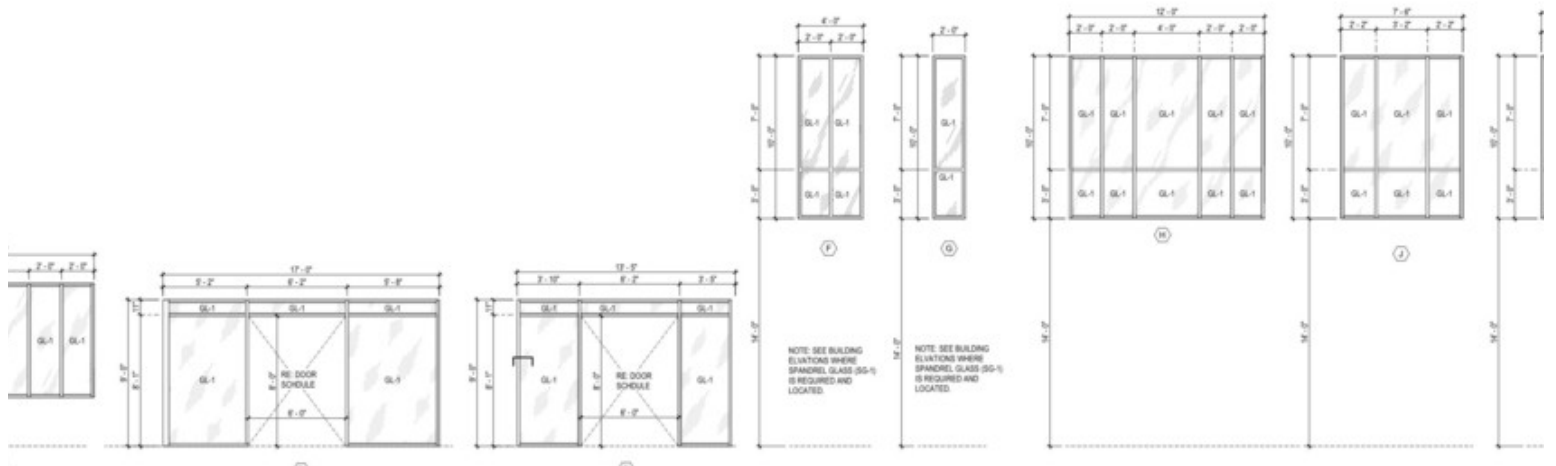
each distinct glazing type used in the entire project. Please note that head, jamb, and sill details will refer to a plan detail or section detail. Corresponding details must be appropriately named as it will be the case for each type. Follow the graphic standards and notes in the image below.

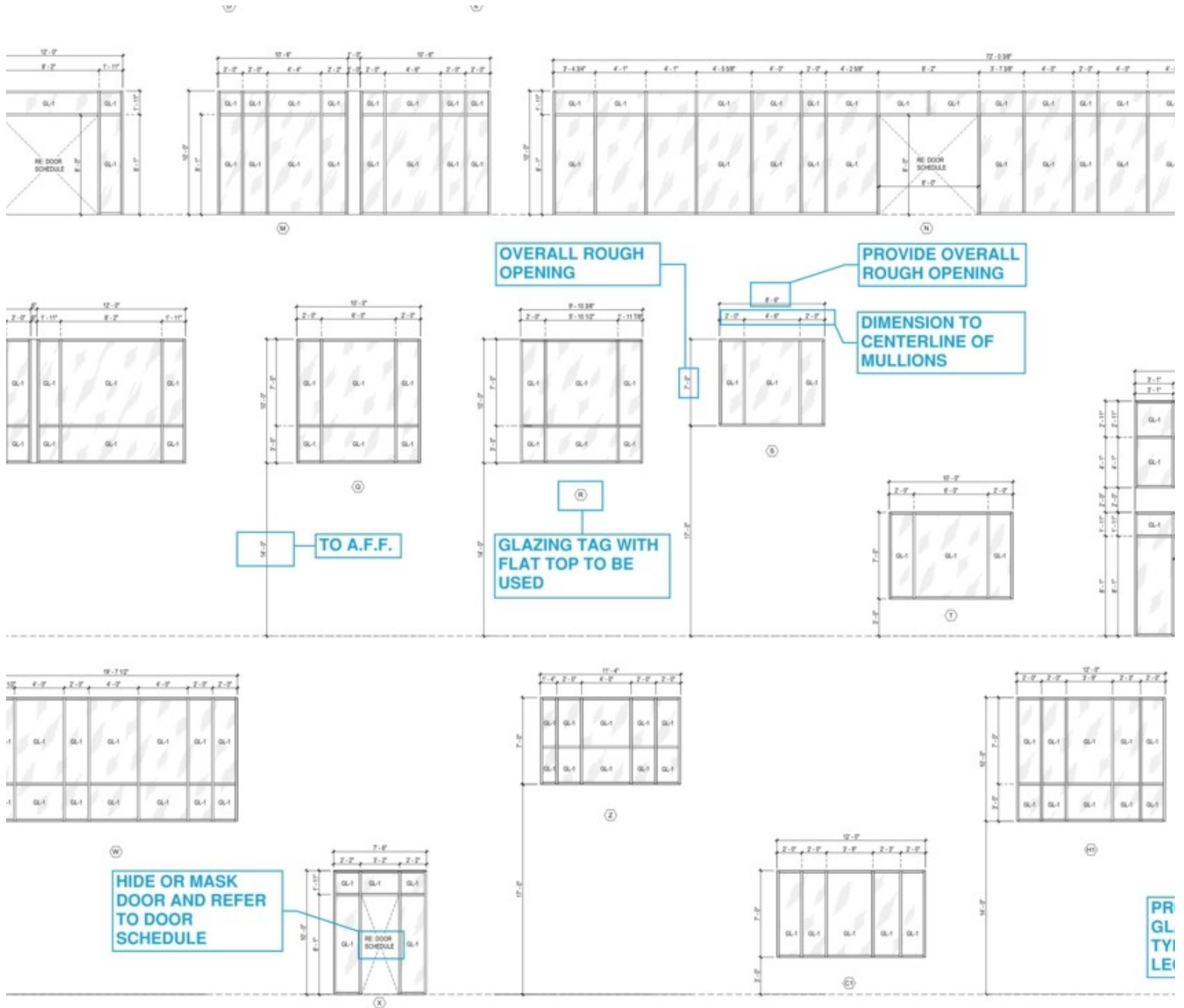
For each glazing type and locate sill height from selected level's finish floor.

Dimensioning, in addition to, mullion subdivisions dimensioned to the centerline of mullions.

Identify each glazing type in addition to the glazing type tag.

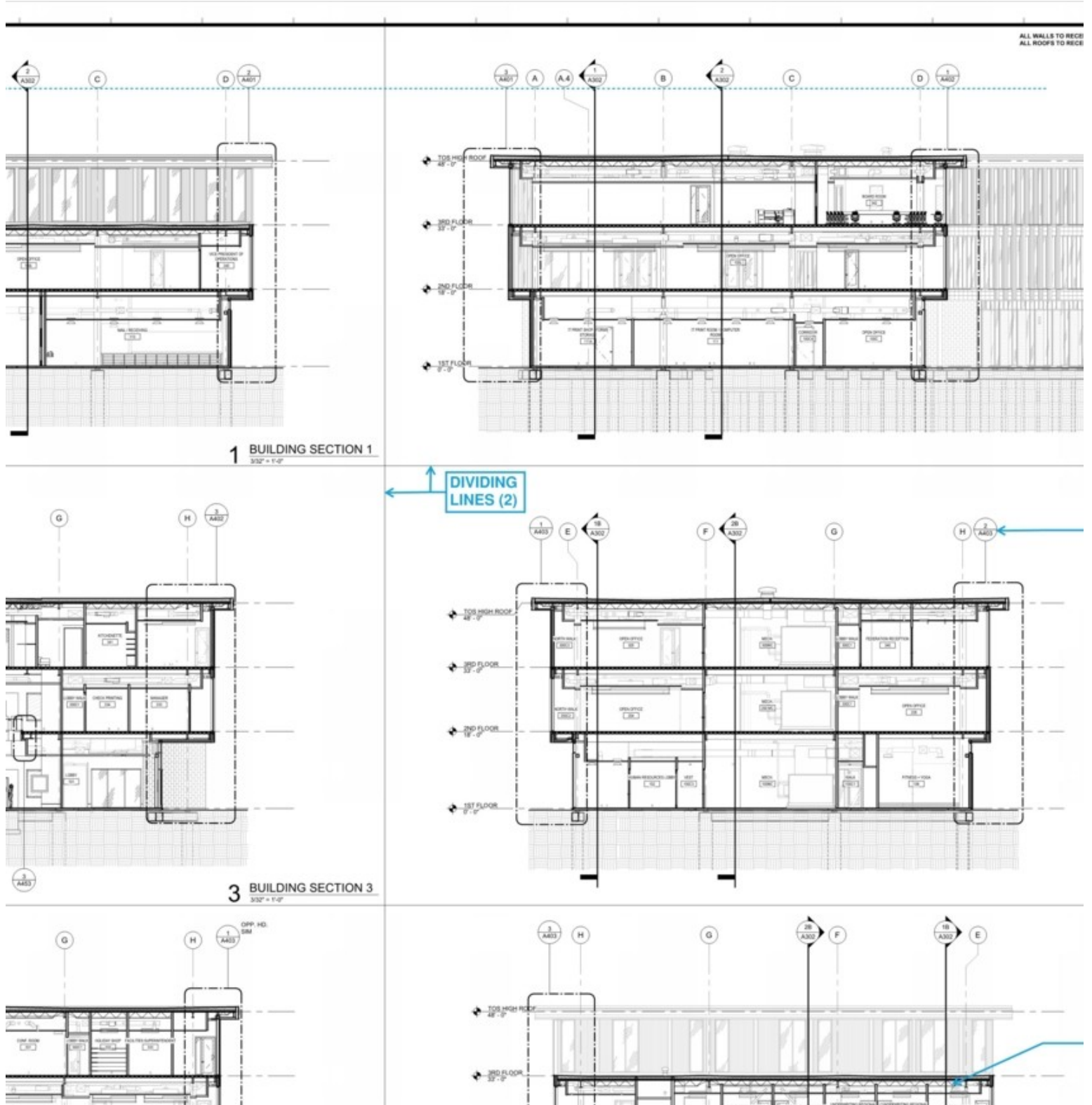
For each glazing type used on a project, identify whether glazing type is for exterior or interior use.

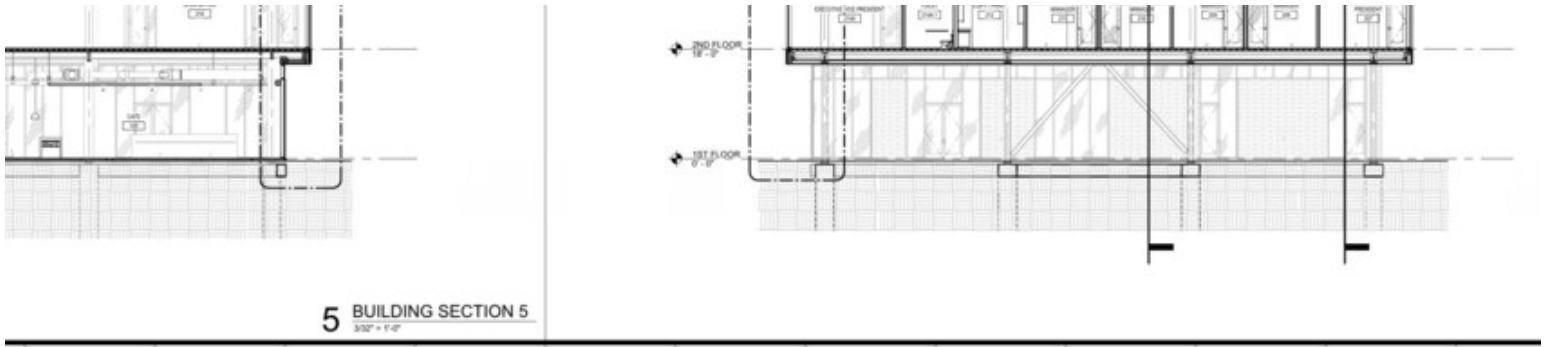




action documents set will mainly be used as a reference point for wall sections and details but should coordinate with floor plans.

levels, section markers, and detail callouts. Ensure that annotations do not obscure one another or any information.





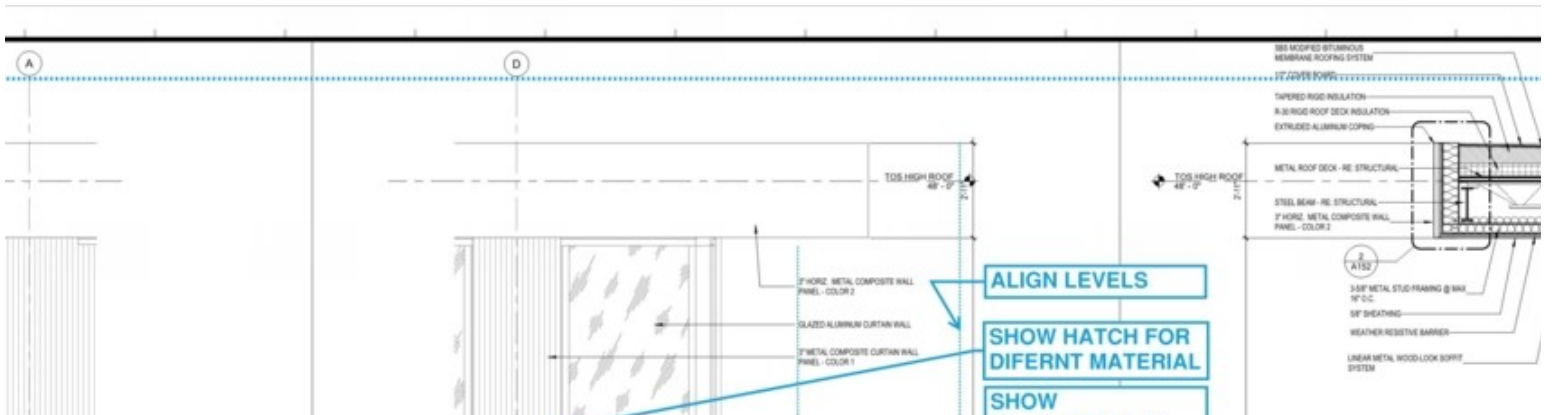
the wall sections and details coordinate with the specifications prepared for the project. The graphic s

2" = 1'-0" but may be adjusted as needed if not feasible.

ments over any items in a consultant model (i.e. structural, mechanical, electrical, etc.) so that items ca
all assembly are legible and the annotation leaders are pointing to the correct items. All notes are to
her or building elements.

n Revit to distinguish cut plane from elements beyond. Only include view to items beyond when relev
coordinate finish elevation with Civil.

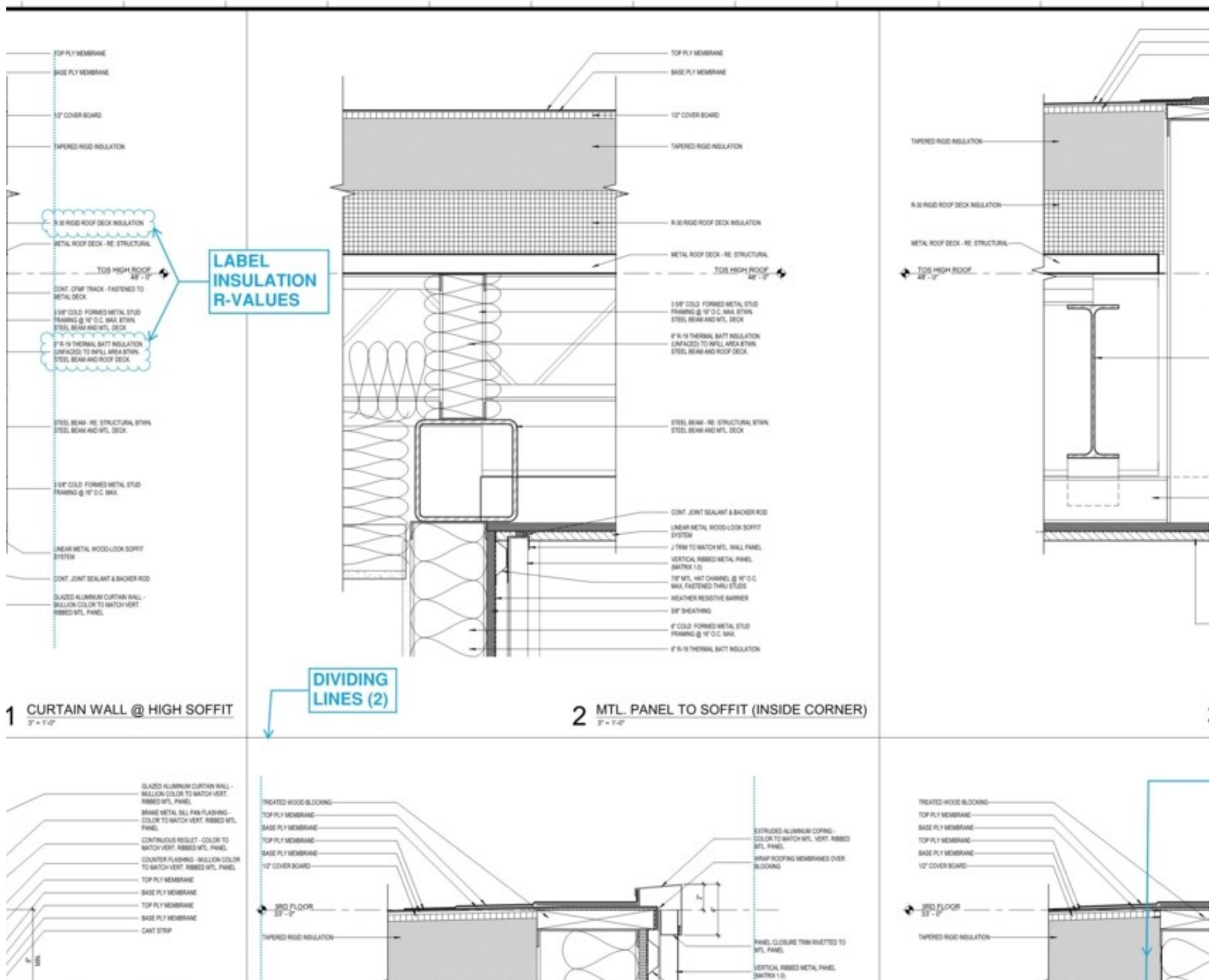
ded. Ensure that detail drawing reference does not obscure any portion of the drawing.

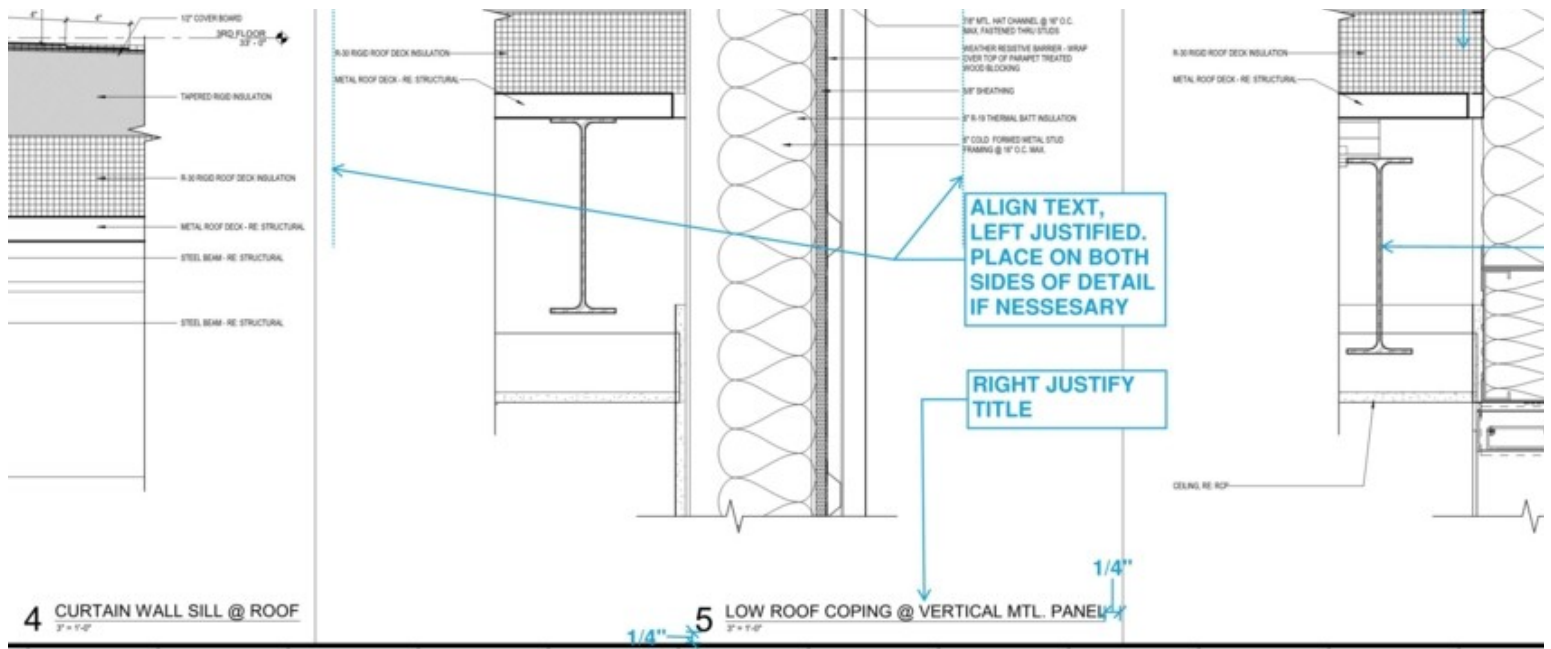


1'-0".

all assembly are legible and the annotation leaders are pointing to the correct items. All notes are to her or building elements. Separation between layers in the wall assembly may be exaggerated to prov onents, and other small elements can be clearly be clearly identified.

notations is consitent throughout project and is coordinated with the information listed in the project | text leaders.

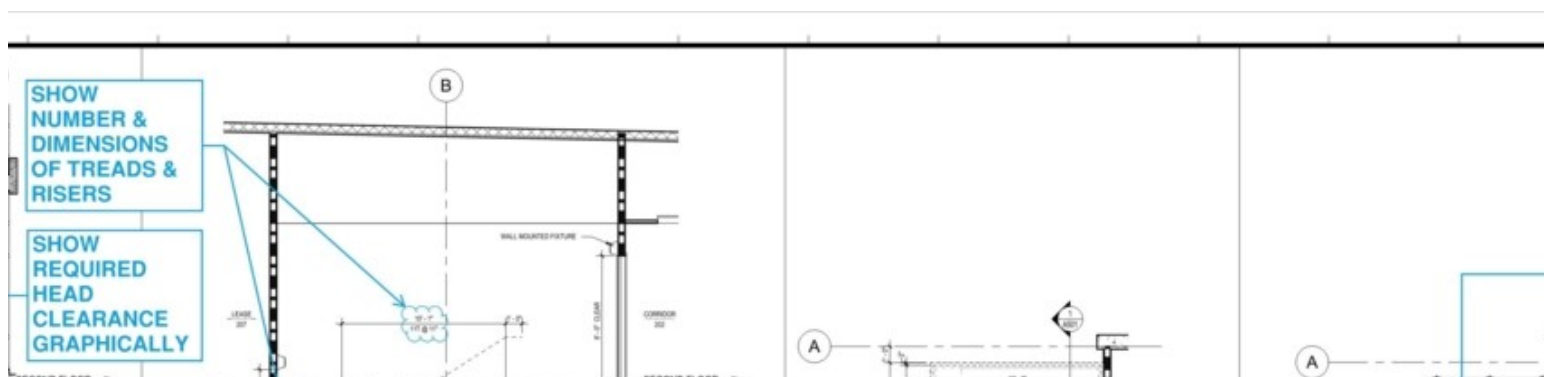


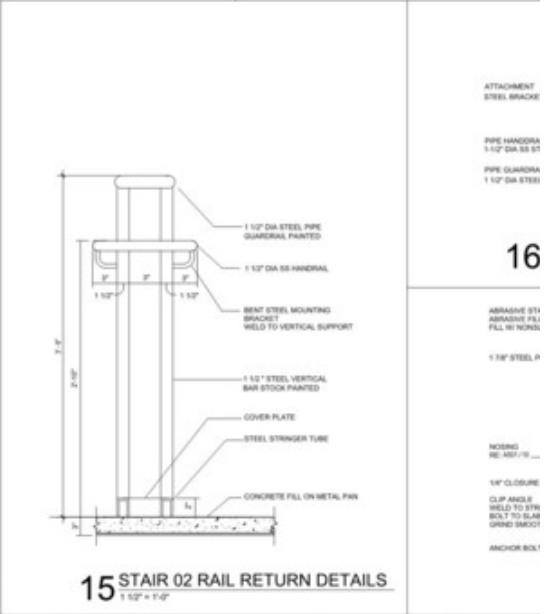
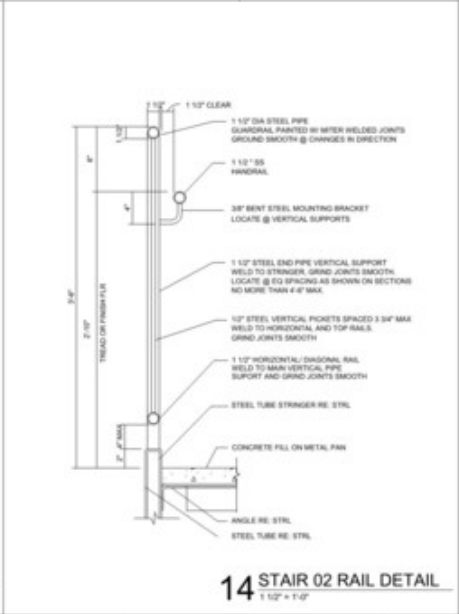
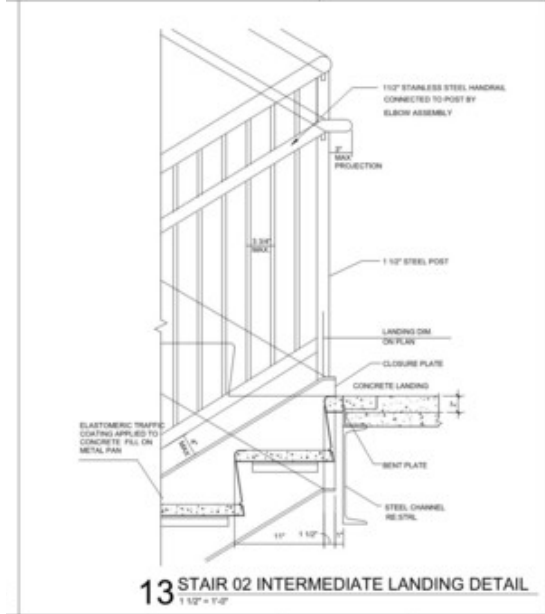
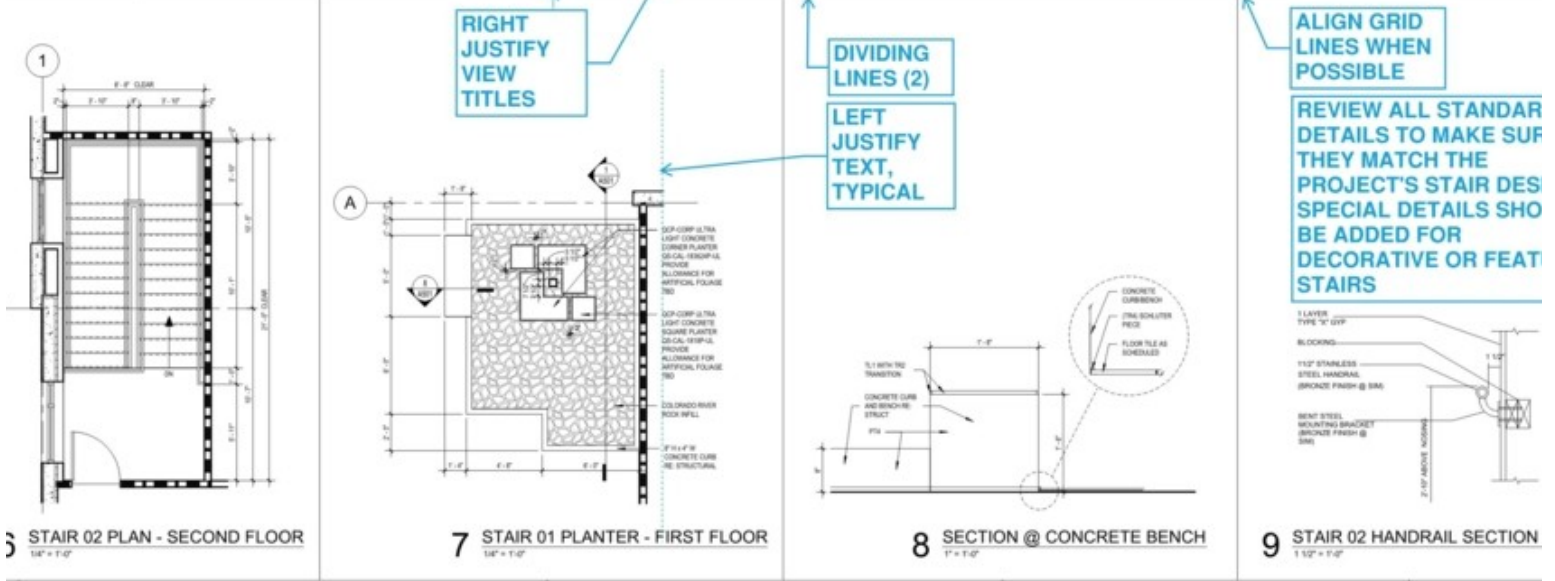
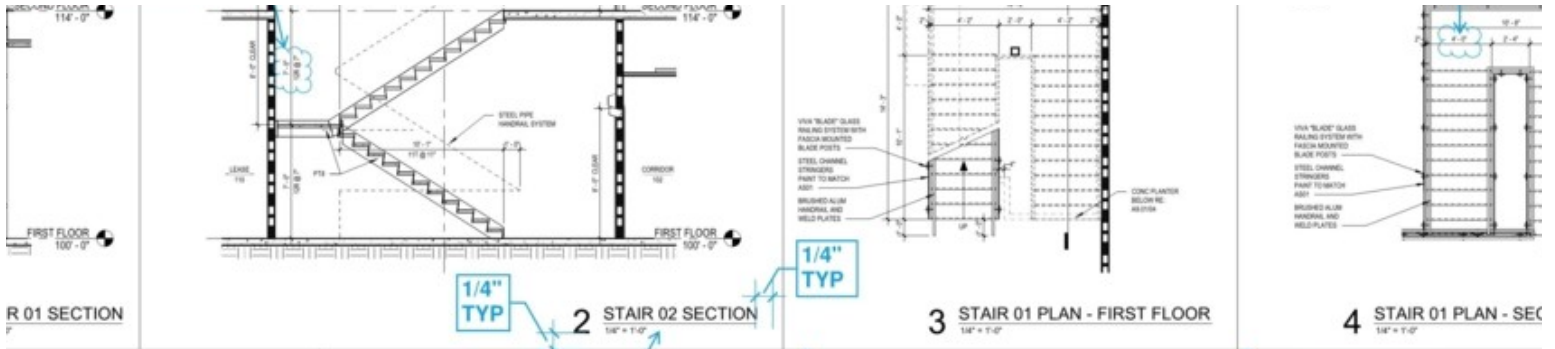


Include all stair, elevator, and ramp related information. This series of drawings should include the circulation plan and section drawings is 1/4" = 1'-0".

required information (stair widths, riser/tread dimensions, landing elevations, handrail heights, etc.). Submission to the Authority Having Jurisdiction for review.

included on the same drawing sheet if space allows. Typically, each vertical circulation element (egress meets with the associated details following the plan and section drawings.



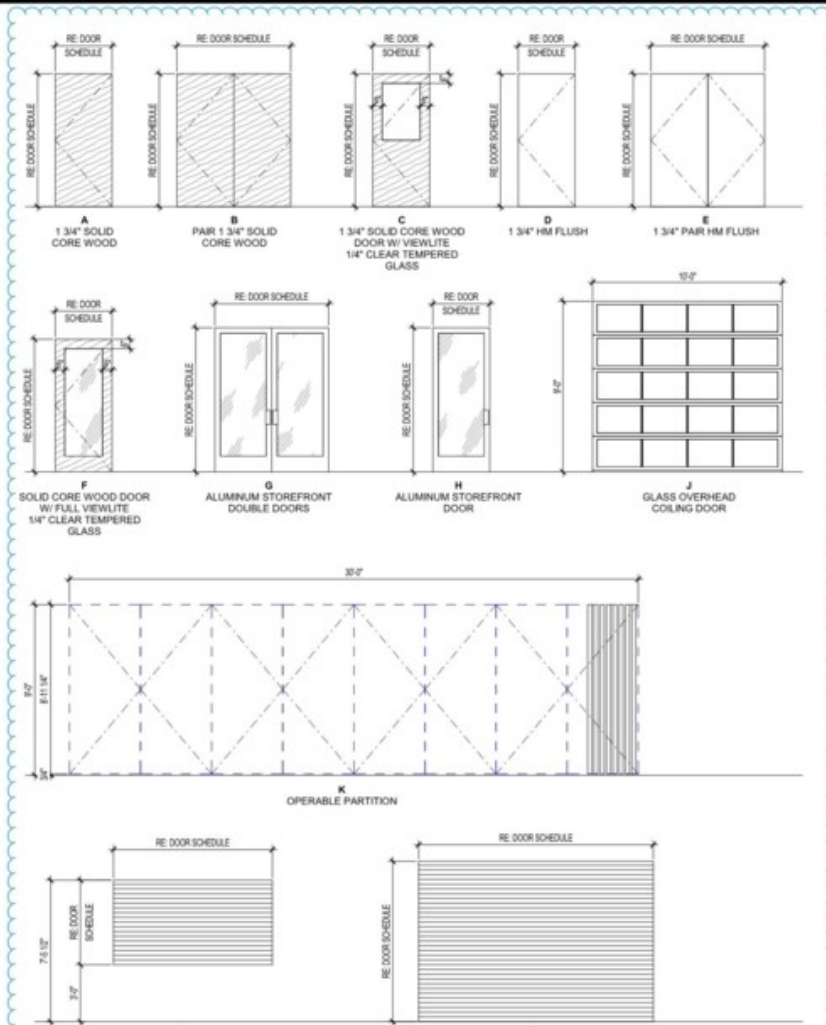


ed with the hardware consultant during the Construction Documents phase with any relevant coordin

ire that all fields in the door schedule have been filled out and coordinated with the information listec
types, number, and materiality has been fully reviewed.

pe of door used on the project. Provide dimensions on elevations with glazing or other requirements
s should be referred to specific instances in the door schedule.

pend and ensure that frame depths have been coordinated with door types and wall assembly require
floor located in brick or CMU so that the frame coordinates with the masonry coursing.



DOOR SCHEDULE								
DOOR								
NO.	TYPE	WIDTH	HEIGHT	THICKNESS	MATERIAL	FINISH	GLAZING	RATING
109A	G	6'-0"	8'-0"	1 3/4"	AL	ANODIZED	GL	
109B	G	6'-0"	8'-0"	1 3/4"	AL	ANODIZED	GL	
101A	H	3'-0"	7'-0"	1 3/4"	AL	ANODIZED	GL	
101B	-	3'-0"	7'-0"	1 3/4"	-	NONE	-	
102	A	3'-0"	7'-0"	1 3/4"	WD	STAIN		
103	A	3'-0"	7'-0"	1 3/4"	WD	STAIN		
104	A	3'-0"	7'-0"	1 3/4"	WD	STAIN		
105	A	3'-0"	7'-0"	1 3/4"	WD	STAIN		
106	A	3'-0"	7'-0"	1 3/4"	WD	STAIN		
107	A	3'-0"	7'-0"	1 3/4"	WD	STAIN		
108A	G	6'-0"	7'-0"	1 3/4"	AL	ANODIZED	GL	
108B	G	6'-0"	7'-0"	1 3/4"	AL	ANODIZED	GL	
109	A	3'-0"	7'-0"	1 3/4"	WD	STAIN		
110A	G	6'-0"	7'-0"	1 3/4"	AL	ANODIZED	GL	
110B	D	3'-0"	7'-0"	1 3/4"	HM	PAINT		
111	A	3'-0"	7'-0"	1 3/4"	WD	STAIN		
112	A	3'-0"	7'-0"	1 3/4"	WD	STAIN		
113	A	3'-0"	7'-0"	1 3/4"	WD	STAIN		
114	A	3'-0"	7'-0"	1 3/4"	WD	STAIN		
115	F	3'-0"	7'-0"	1 3/4"	WD	STAIN	GL	
116	A	3'-0"	7'-0"	1 3/4"	WD	STAIN		
117	A	3'-0"	7'-0"	1 3/4"	WD	STAIN		
118	F	3'-0"	7'-0"	1 3/4"	WD	STAIN	GL	
119	F	3'-0"	7'-0"	1 3/4"	WD	STAIN	GL	
120	F	3'-0"	7'-0"	1 3/4"	WD	STAIN	GL	
121	E	6'-0"	7'-0"	1 3/4"	HM	PAINT		
122	A	3'-0"	7'-0"	1 3/4"	WD	STAIN		
123	F	3'-0"	7'-0"	1 3/4"	WD	STAIN	GL	
124A	F	3'-0"	7'-0"	1 3/4"	WD	STAIN	GL	
124B	K	24'-0"	9'-0"	2 1/2"	WD	STAIN	GL	
125A	F	7'-0"	7'-0"	1 3/4"	WD	STAIN	GL	
125B	J	10'-0"	8'-0"	0"	AL			
126	H	3'-0"	7'-0"	1 3/4"	AL	ANODIZED	GL	
127	F	3'-0"	7'-0"	1 3/4"	WD	STAIN	GL	
128A	F	3'-0"	7'-0"	1 3/4"	WD	STAIN	GL	
128B	J	10'-0"	8'-0"	0"	AL			
129	A	3'-0"	7'-0"	1 3/4"	WD	STAIN		
130	A	3'-0"	7'-0"	1 3/4"	WD	STAIN		
131	A	3'-0"	7'-0"	1 3/4"	WD	STAIN		
132	A	3'-0"	7'-0"	1 3/4"	WD	STAIN		
133	A	3'-0"	7'-0"	1 3/4"	WD	STAIN		
134A	A	3'-0"	7'-0"	1 3/4"	WD	STAIN		
134B	L	8'-0"	4'-0"	1"				
135	A	3'-0"	7'-0"	1 3/4"	WD	STAIN		
136A	G	6'-0"	8'-0"	1 3/4"	AL	ANODIZED	GL	
136B	G	6'-0"	8'-0"	1 3/4"	AL	ANODIZED	GL	
137A	A	3'-0"	7'-0"	1 3/4"	WD	STAIN		
137B	D	4'-0"	7'-0"	1 3/4"	HM	PAINT		
137C	M	23'-3"	7'-0"	1"				
138	A	3'-0"	7'-0"	1 3/4"	WD	STAIN		
139	A	3'-0"	7'-0"	1 3/4"	WD	STAIN		
140A	G	6'-0"	7'-0"	1 3/4"	AL	ANODIZED	GL	
140B	G	6'-0"	7'-0"	1 3/4"	AL	ANODIZED	GL	
140C	E	6'-0"	7'-0"	1 3/4"	HM	PAINT		
140D	E	6'-0"	7'-0"	1 3/4"	HM	PAINT		
140E	E	8'-0"	7'-0"	1 3/4"	HM	PAINT		
142	A	3'-0"	7'-0"	1 3/4"	WD	STAIN		
143	A	3'-0"	7'-0"	1 3/4"	WD	STAIN		
144	A	6'-0"	7'-0"	1 3/4"	WD	STAIN		45 MIN
145	A	3'-0"	7'-0"	1 3/4"	WD	STAIN		
146A	A	3'-0"	7'-0"	1 3/4"	WD	STAIN		
146B	M	12'-0"	8'-0"	1"				
147	F	3'-0"	7'-0"	1 3/4"	WD	STAIN	GL	
148	A	3'-0"	7'-0"	1 3/4"	WD	STAIN		
149	A	3'-0"	7'-0"	1 3/4"	WD	STAIN		
150	A	3'-0"	7'-0"	1 3/4"	WD	STAIN		
150B	A	3'-0"	7'-0"	1 3/4"	WD	STAIN		
151A	A	3'-0"	7'-0"	1 3/4"	WD	STAIN		
151B	M	12'-0"	8'-0"	1"				
151C	A	3'-0"	7'-0"	1 3/4"	WD	STAIN		45 MIN

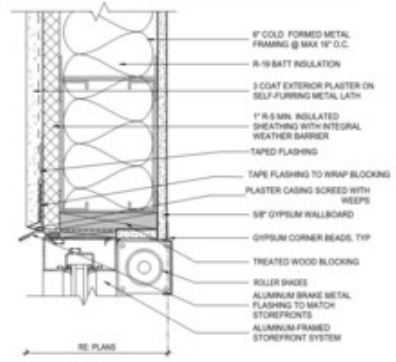
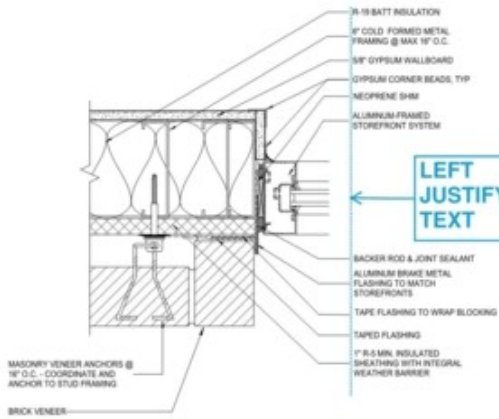
D - BRICK

2 EXT. DOOR JAMB - BRICK

3 EXT. DOOR HEAD - STUCCO

RIGHT JUSTIFY VIEW TITLES

LEFT JUSTIFY TEXT



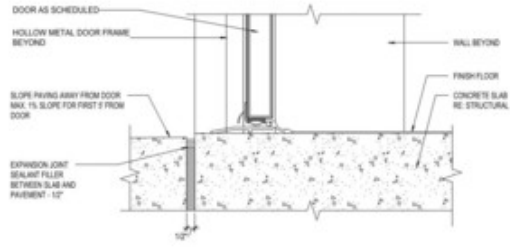
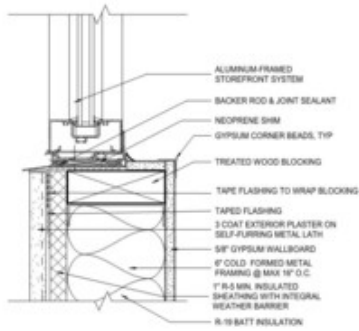
- 1/2\"/>

- TAPE FLASHING
- 3-COAT EXTERIOR SELF-FURRING WEATHER BARRIER
- 1\"/>

J @ BRICK

6 STOREFRONT - JAMB @ BRICK

7 STOREFRONT - HEAD @ STUCCO



- WALL BEYOND
- FINISH FLOOR
- CONCRETE SLAB RE STRUCTURAL

@ BRICK

10 STOREFRONT - SILL @ STUCCO

11 EXT. DOOR SILL

-PROVIDE DETAILS AT EVERY EXTERIOR CONDITIONAL CHANGE - DETAILS DRAWN AT 3\"/>

VERTICAL AND HORIZONTAL DIVIDER LINES #2