

Deliverable Guidelines

Effective on Oct 15, 2025

The guidelines below for drawings to be issued in the Design Development phase, please refer to the **Map** to ensure that all of the appropriate information is included in the drawing set.

For the Design Development phase, all Life Safety requirements should be included in the drawing set as a design is in compliance. The Life Safety documentation to be included in the DD deliverables are a Code Book and Life Safety Drawings.

Code Book Review

Applicable code sections and their corresponding requirements for both the IBC and NFPA.

The Life Safety Summary chart that is included in the Revit template.

Table 1001.1.1 - Means of Egress

1. Doors shall be self-closing doors, automatic-closing doors, or doors that provide equivalent level of protection required by the fire resistance-rated construction.

2. Doors shall be self-closing doors, automatic-closing doors, or doors that provide equivalent level of protection required by the fire resistance-rated construction.

3. Doors shall be self-closing doors, automatic-closing doors, or doors that provide equivalent level of protection required by the fire resistance-rated construction.

4. Doors shall be self-closing doors, automatic-closing doors, or doors that provide equivalent level of protection required by the fire resistance-rated construction.

5. Doors shall be self-closing doors, automatic-closing doors, or doors that provide equivalent level of protection required by the fire resistance-rated construction.

6. Doors shall be self-closing doors, automatic-closing doors, or doors that provide equivalent level of protection required by the fire resistance-rated construction.

7. Doors shall be self-closing doors, automatic-closing doors, or doors that provide equivalent level of protection required by the fire resistance-rated construction.

8. Doors shall be self-closing doors, automatic-closing doors, or doors that provide equivalent level of protection required by the fire resistance-rated construction.

9. Doors shall be self-closing doors, automatic-closing doors, or doors that provide equivalent level of protection required by the fire resistance-rated construction.

10. Doors shall be self-closing doors, automatic-closing doors, or doors that provide equivalent level of protection required by the fire resistance-rated construction.

Table 1001.1.2 - Exit Signs

1. Exit signs shall be illuminated at all times.

2. Exit signs shall be illuminated at all times.

3. Exit signs shall be illuminated at all times.

4. Exit signs shall be illuminated at all times.

5. Exit signs shall be illuminated at all times.

6. Exit signs shall be illuminated at all times.

7. Exit signs shall be illuminated at all times.

8. Exit signs shall be illuminated at all times.

9. Exit signs shall be illuminated at all times.

10. Exit signs shall be illuminated at all times.

Notes on these drawing guidelines:

Approved means of egress... for egress... approved means of egress... approved means of egress...

Approved means of egress... Approved means of egress... Approved means of egress... Approved means of egress...

Approved means of egress... Approved means of egress... Approved means of egress... Approved means of egress...

Table with 2 columns: Item, Description. Includes items like 'OTHER PERFORMANCE PARTITIONS', 'ROOF CONSTRUCTION', 'STAIRS', 'ELEVATOR SHAFTS', 'MECHANICAL VENT SYSTEMS', 'STORAGE ROOMS', 'LAUNDRY ROOMS'.

GENERAL INFORMATION... Table with 2 columns: Item, Description. Includes items like 'GENERAL INFORMATION', 'MEANS OF EGRESS', 'ELEVATOR SHAFTS', 'MECHANICAL VENT SYSTEMS', 'STORAGE ROOMS', 'LAUNDRY ROOMS'.

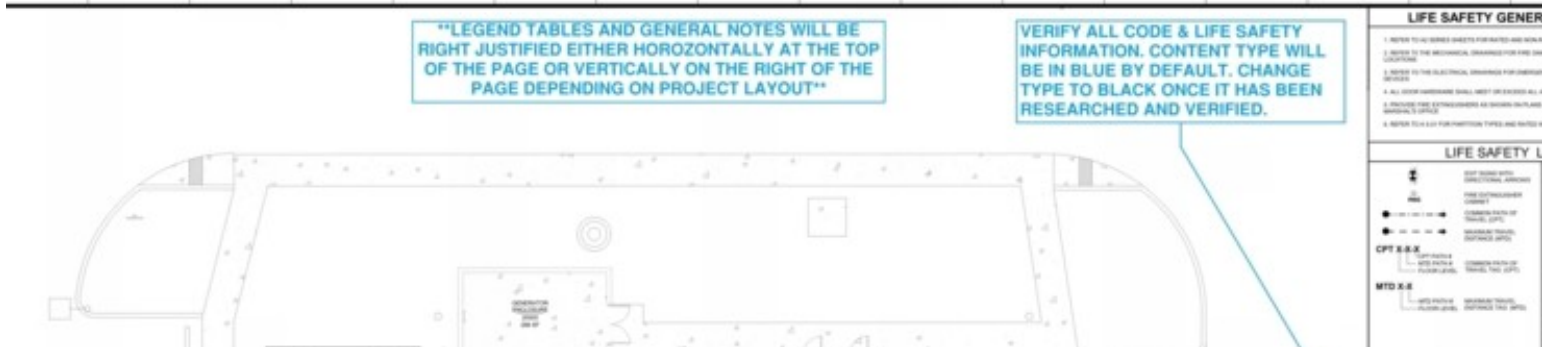


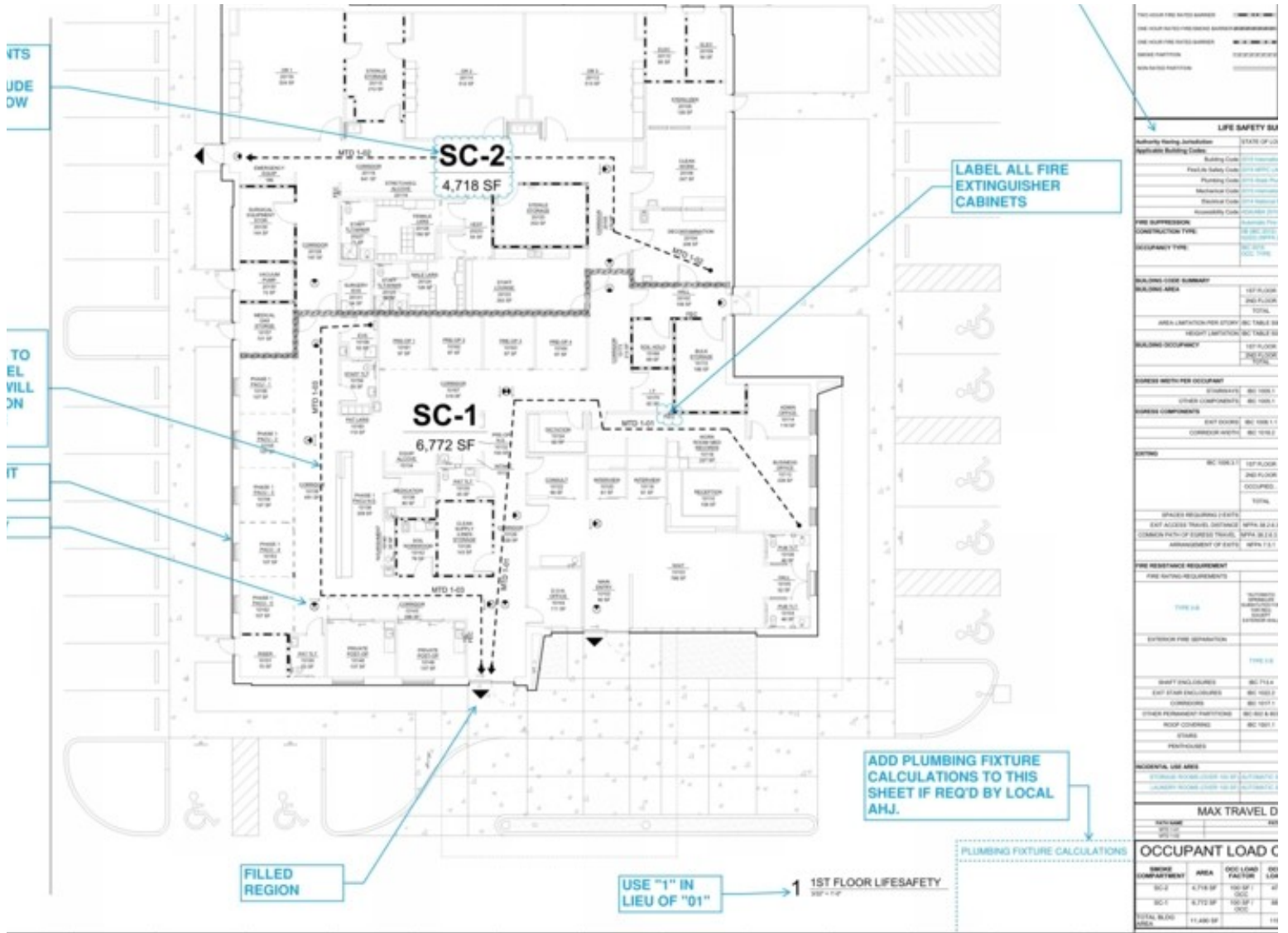
wings

In Development Drawings Checklist for listing of all information to include on drawings.

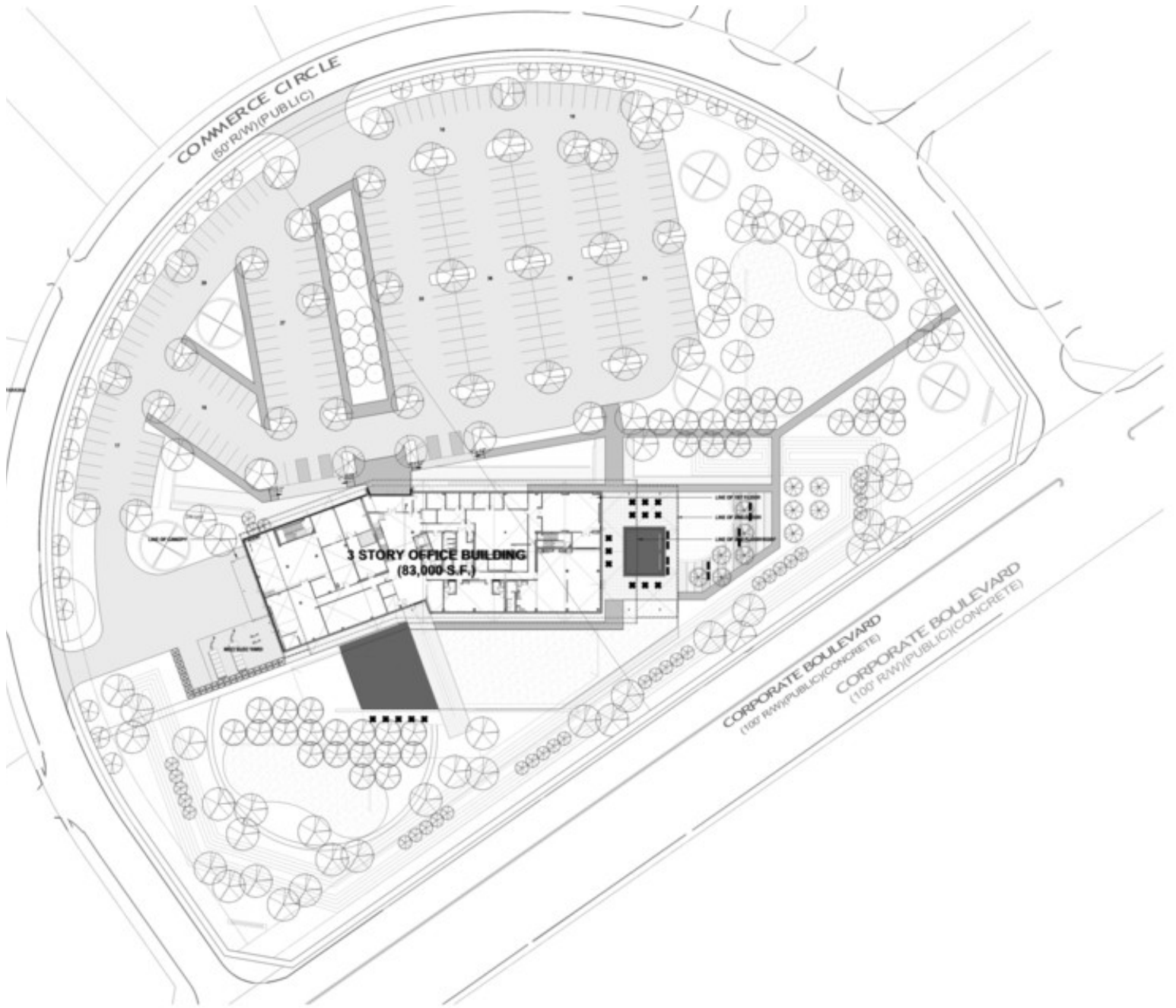
wings are clearly labelled and hatched regions identifying building occupancies are defined with a dr... e appropriate components or line styles are used to display the Common Path of Travel, Exit Separati... so that they graphically correspond with the legend.

calculations and information included on the drawings is correct and is in compliance to the requirem... mmmary.





ings between the Civil and Landscape disciplines are properly coordinated in the Architectural drawing. The consultants are linked into the Revit model with their visibility settings modified to reflect the drawing. Landscape consultants do not typically work in Revit and, therefore, do not have access to the most updated CAD drawings from the Revit model to the consultants as early as possible to allow for proper coordination Development deadline.



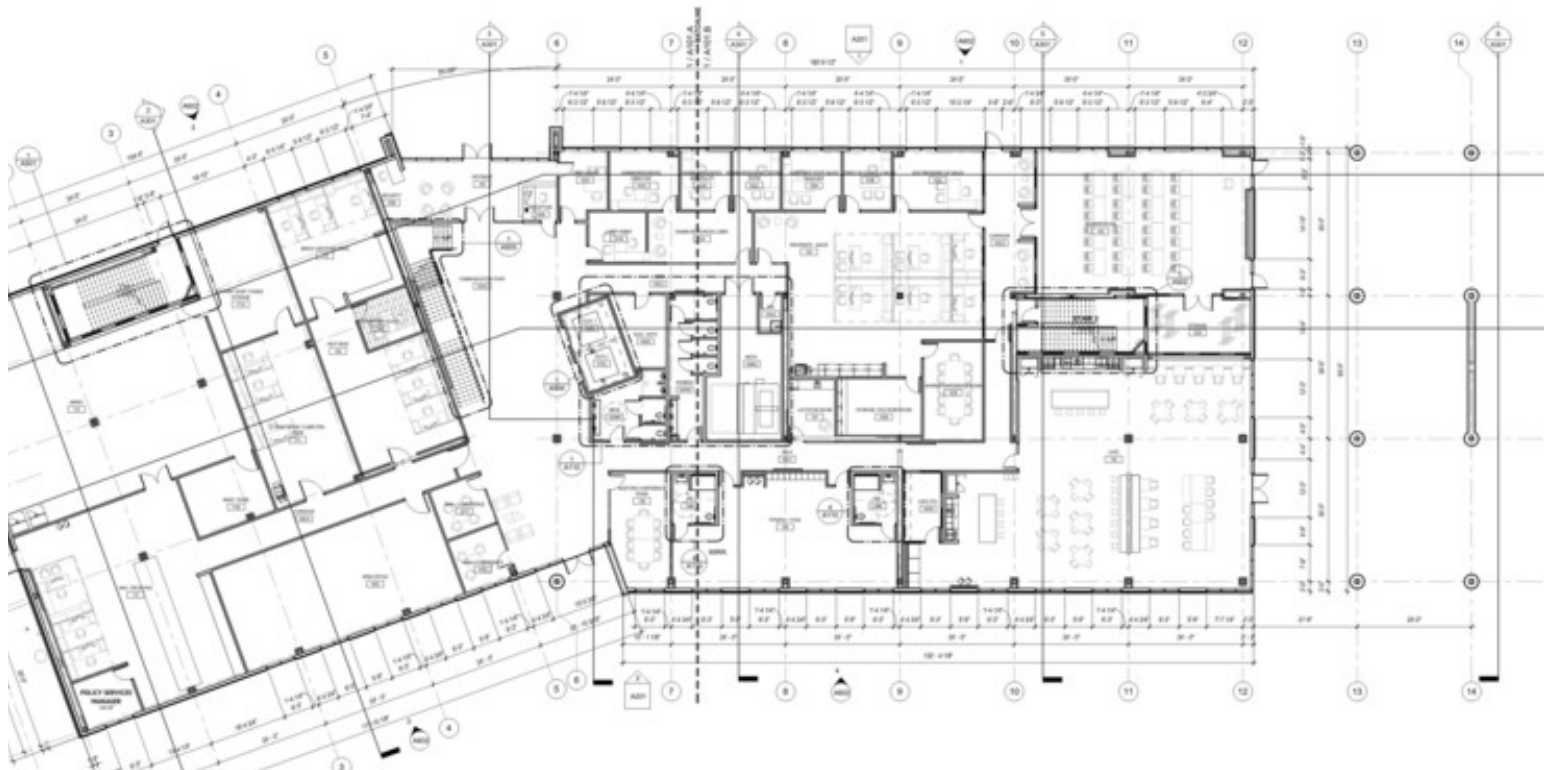
Development Drawings Checklist for listing of all information to include on drawings and the GHC drawings ensure the following:

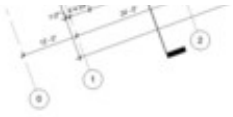
ions and names coordinate with Structural's drawings and are neatly aligned.

rawing callouts and references are included and placed so that their sheet reference is legible without drawing. Dimensions and section marks should consistently aligned to correspond with the organization.

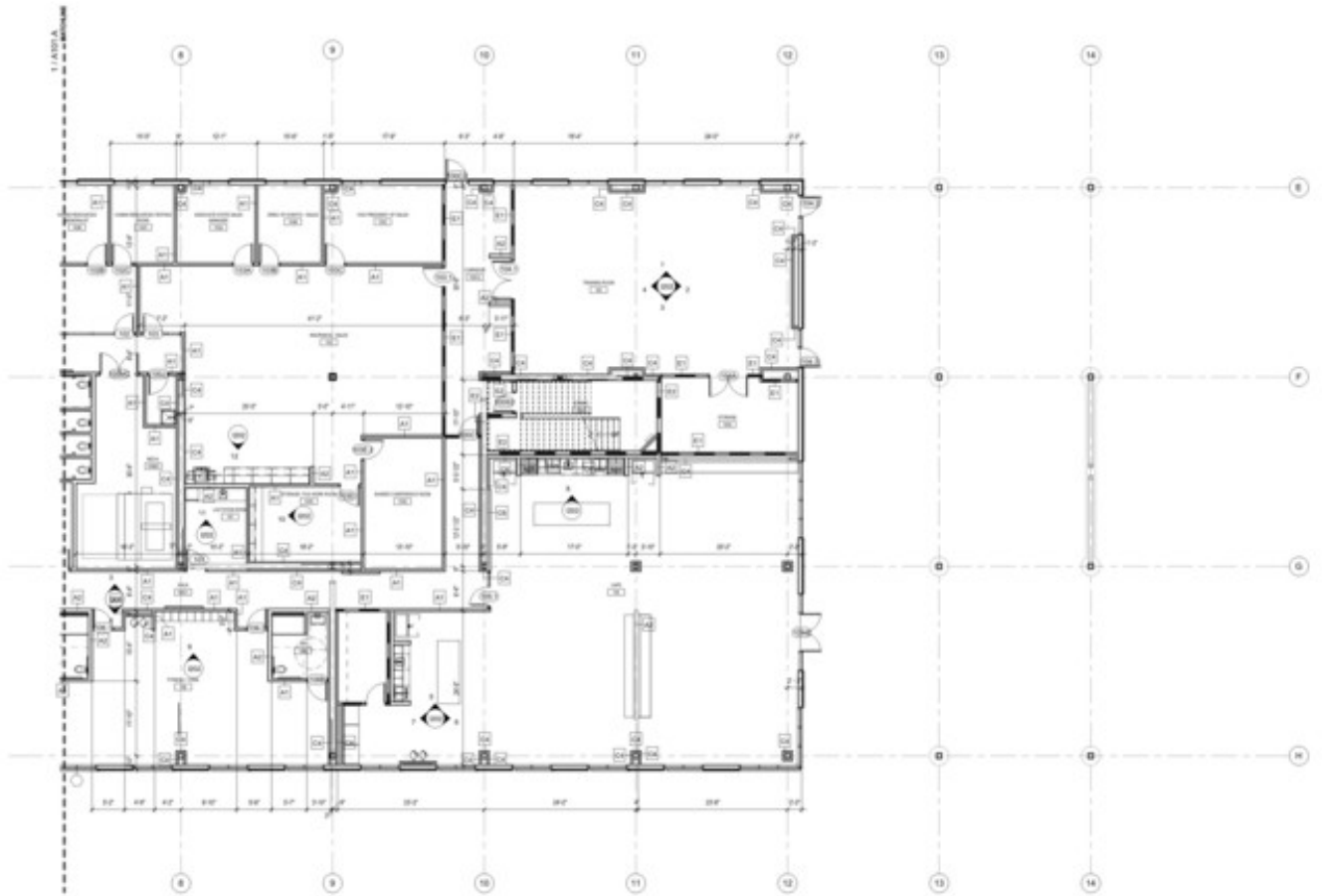
ors are labelled and numbered properly. If the project is a large building, the door labels may be included to not obscure the overall floor plan.

nt general notes, tags, legends, and key plans (if necessary).





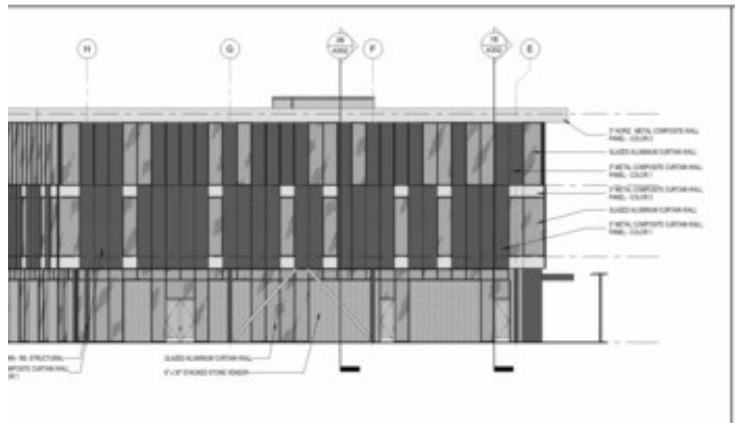
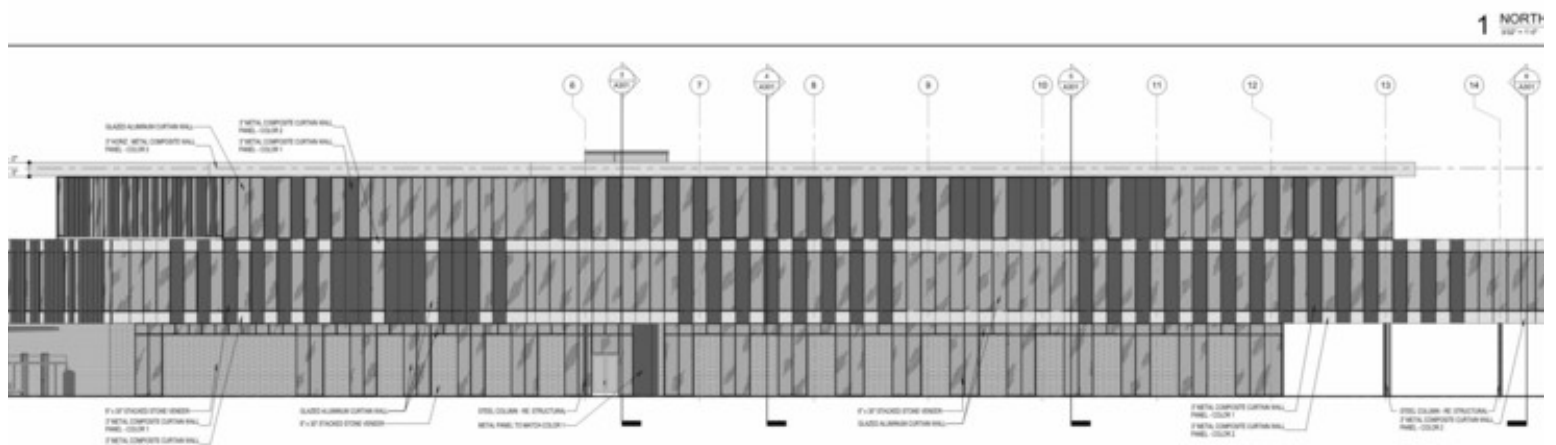
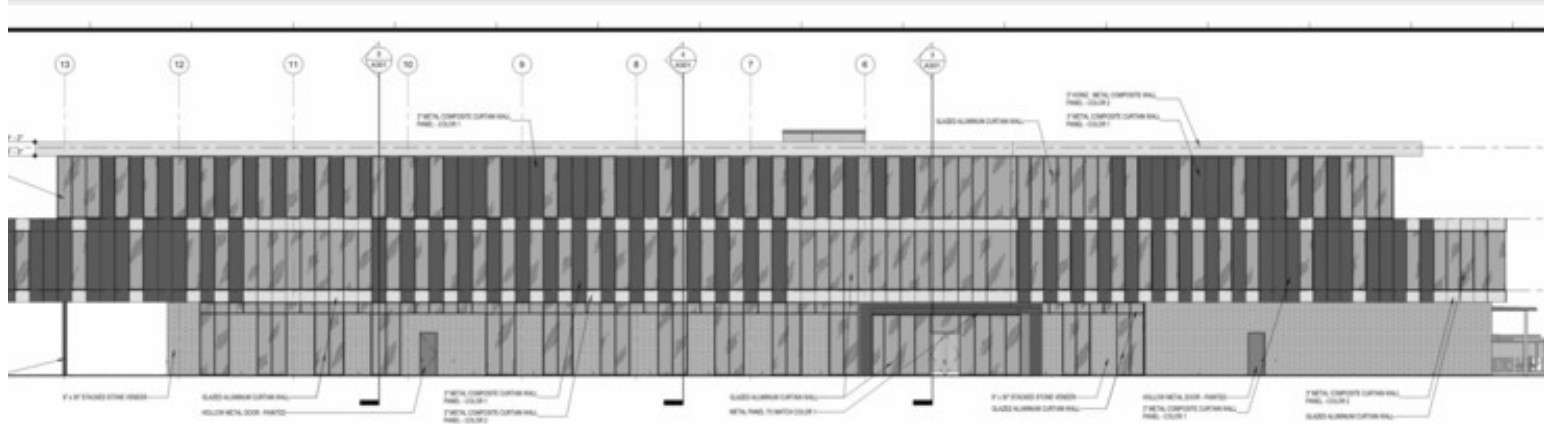
1 1ST FLOOR - OVERA
10'-0" x 10'-0"



1 1ST FLOOR - SECTOR
10'-0" x 10'-0"

ions

ations included in the Design Development phase should identify the various building elements and nation with Design Development Drawings Checklist. Ensure all grids, notes, section marks, tags, etc



3 EAST ELEVATION
SDF-112

4 WEST
SDF-112

ns

sections included in the Schematic Design phase, building sections included in the Design Development phase should show the structure, envelope, and interior spaces but should not show the details of the envelope assembly over roofs, floors, walls, and plenum spaces but should display the layers of each assembly.

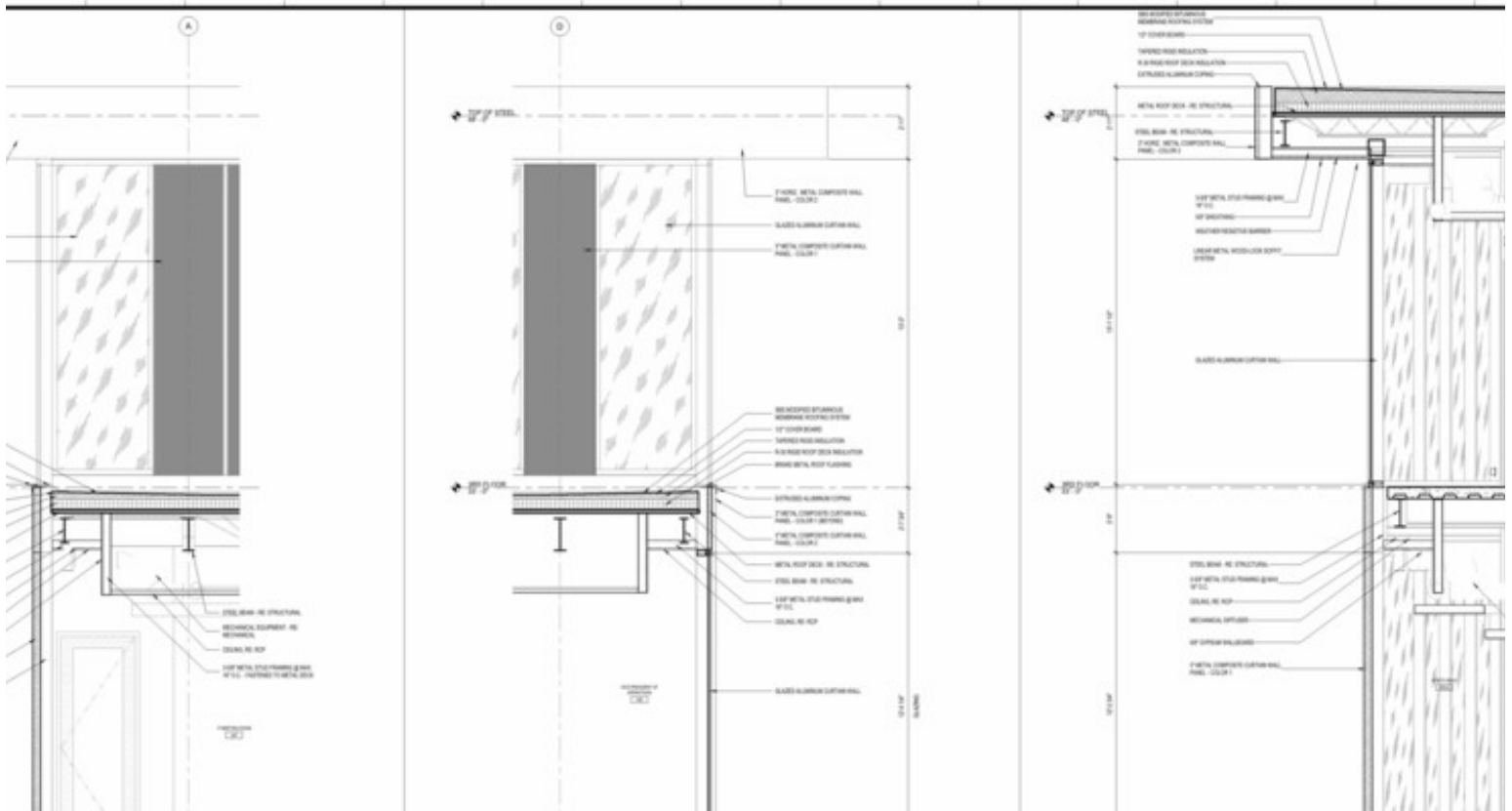


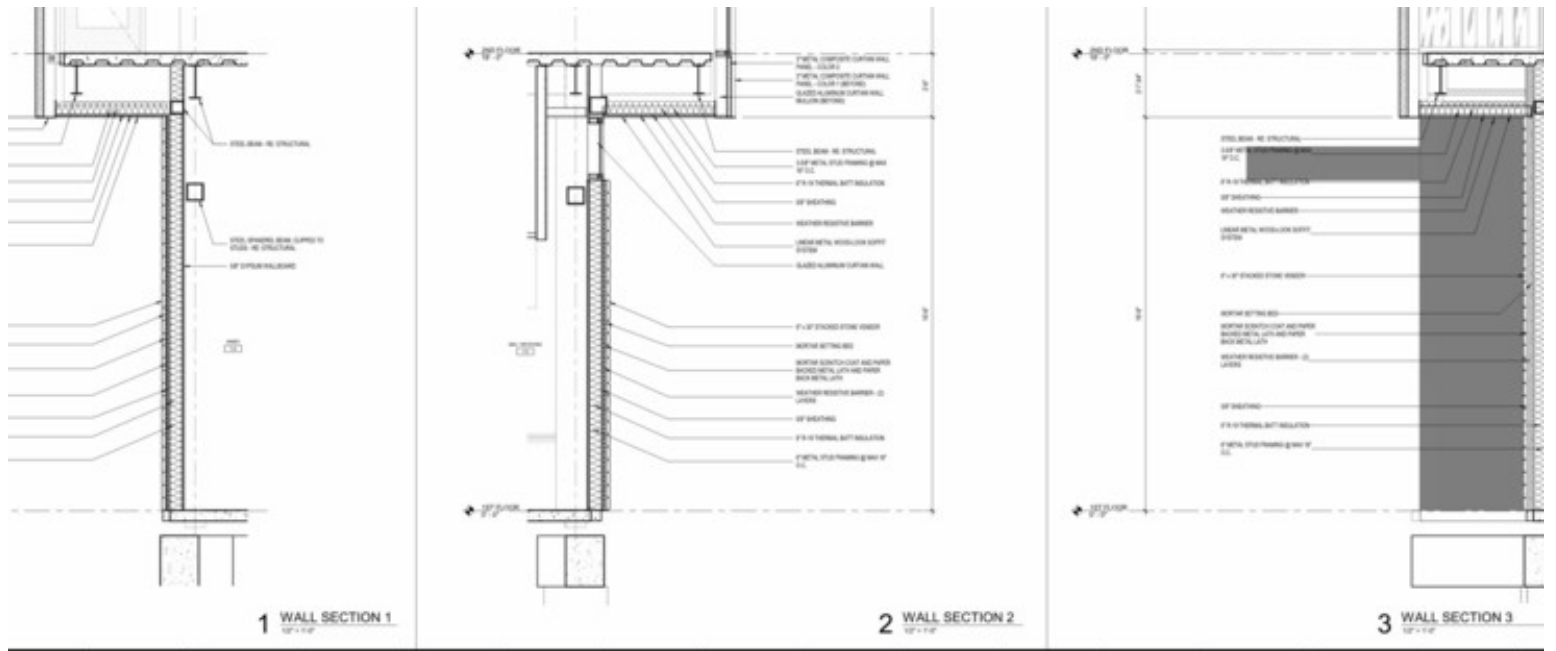
project manager for which wall sections will best describe typical building assemblies and requirements.

keynote annotations to accurately describe building materials and assemblies. Align annotations and between building elements and annotations.

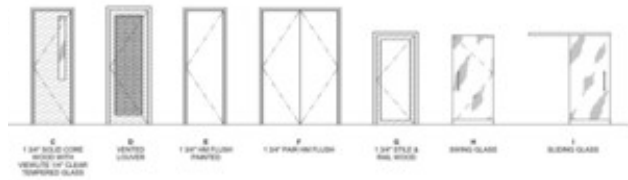
callouts if necessary and coordinate callout location with annotations. Coordinate with project manager during the Design Development phase.

ons and levels to clearly define relationship between floor levels and exterior fenestration.





able to ensure all door types, numbers, and sizes are accurate and graphically organized. Information is coordinated as early as possible in the Design Development phase so that the information can be set prior to the scheduled deadline to coordinate preliminary hardware specifications for the project.



DOOR SCHEDULE						
WIDTH	HEIGHT	TYPE	FRAME	FINISH	RATING	COMMENTS
3'-0"	7'-0"					
3'-0"	7'-0"					
3'-0"	7'-0"					
3'-0"	7'-0"					
3'-0"	7'-0"					
3'-0"	7'-0"					
3'-0"	7'-0"					
3'-0"	7'-0"					
3'-0"	7'-0"					
3'-0"	7'-0"					
3'-0"	7'-0"					
3'-0"	7'-0"					
3'-0"	7'-0"					
3'-0"	7'-0"					
3'-0"	7'-0"					
3'-0"	7'-0"					
3'-0"	7'-0"					
3'-0"	7'-0"					
3'-0"	7'-0"					
3'-0"	7'-0"					
3'-0"	7'-0"					
3'-0"	7'-0"					
3'-0"	7'-0"					
3'-0"	7'-0"					
3'-0"	7'-0"					
3'-0"	7'-0"					
3'-0"	7'-0"					
3'-0"	7'-0"					
3'-0"	7'-0"					

DOOR SCHEDULE								
NO	TYPE	DOOR		TYPE	FRAME	FINISH	RATING	COMMENTS
		FINISH	WITH HEIGHT					
01	3'-0" 7'-0"
02	3'-0" 7'-0"
03	3'-0" 7'-0"
04	3'-0" 7'-0"
05	3'-0" 7'-0"
06	3'-0" 7'-0"
07	3'-0" 7'-0"
08	3'-0" 7'-0"
09	3'-0" 7'-0"
10	3'-0" 7'-0"
11	3'-0" 7'-0"
12	3'-0" 7'-0"
13	3'-0" 7'-0"
14	3'-0" 7'-0"
15	3'-0" 7'-0"
16	3'-0" 7'-0"
17	3'-0" 7'-0"
18	3'-0" 7'-0"
19	3'-0" 7'-0"
20	3'-0" 7'-0"
21	3'-0" 7'-0"
22	3'-0" 7'-0"
23	3'-0" 7'-0"
24	3'-0" 7'-0"
25	3'-0" 7'-0"
26	3'-0" 7'-0"
27	3'-0" 7'-0"
28	3'-0" 7'-0"
29	3'-0" 7'-0"
30	3'-0" 7'-0"

DOOR SCHEDULE								
NO	TYPE	DOOR		TYPE	FRAME	FINISH	RATING	COMMENTS
		FINISH	WITH HEIGHT					
31	3'-0" 7'-0"
32	3'-0" 7'-0"
33	3'-0" 7'-0"
34	3'-0" 7'-0"
35	3'-0" 7'-0"
36	3'-0" 7'-0"
37	3'-0" 7'-0"
38	3'-0" 7'-0"
39	3'-0" 7'-0"
40	3'-0" 7'-0"
41	3'-0" 7'-0"
42	3'-0" 7'-0"
43	3'-0" 7'-0"
44	3'-0" 7'-0"
45	3'-0" 7'-0"
46	3'-0" 7'-0"
47	3'-0" 7'-0"
48	3'-0" 7'-0"
49	3'-0" 7'-0"
50	3'-0" 7'-0"



DRAWING INDEX



GENERAL					
T001 COVER SHEET	A401 WALL SECTION DETAILS	803 OVERALL 3RD-FLOOR FURNITURE PLAN	P103 OVERALL 3RD FLOOR PLAN - PLUMBING	P103A PARTIAL 3RD FLOOR PLAN - PLUMBING	P103B PARTIAL 3RD FLOOR PLAN - PLUMBING
T002 GENERAL INFORMATION	A402 VERTICAL CIRCULATION STAIR 1	STRUCTURAL	P105 PLUMBING SCHEDULES	P201 PLUMBING RISER DIAGRAMS	P401 PLUMBING DETAILS
T003 PARTITION FINISH	A403 VERTICAL CIRCULATION LOBBY STAIR	S100.A FOUNDATION PLAN - SECTOR A	P402 PLUMBING DETAILS B	SP101 FIRST FLOOR PLAN - SPRINKLER	SP102 SECOND FLOOR PLAN - SPRINKLER
ARCHITECTURAL SITE	A404 VERTICAL CIRCULATION ELEVATOR	S100.B FOUNDATION PLAN - SECTOR B	SP103 THIRD FLOOR PLAN - SPRINKLER	SP201 SPRINKLER DETAILS	
A0101 ARCHITECTURAL SITE	A405 DOOR SCHEDULE	S101.A SLAB PLAN - SECTOR A			
A0102 SITE DETAILS	A406 EXTERIOR GLAZING ELEVATIONS	S101.B SLAB PLAN - SECTOR B			
LIFESAFETY		S102 SPANDREL FRAMING PLAN			
LS101 1ST AND 2ND FLOOR LIFE SAFETY PLAN	INTERIOR DESIGN	S103.A SECOND-FLOOR FRAMING PLAN - SECTOR A			
LS102 3RD FLOOR LIFE SAFETY PLAN	001 INTERIOR FINISH KEY & GENERAL NOTES	S103.B SECOND-FLOOR FRAMING PLAN - SECTOR B			
CIVIL	1002 INTERIOR FINISH DETAILS	S104.A THIRD FLOOR FRAMING PLAN - SECTOR A			
C100 SITE CLEARING @ PHASE 1 EROSION CONTROL PLAN	1001 OVERALL 1ST FLOOR - FINISH PLAN	S104.B THIRD FLOOR FRAMING PLAN - SECTOR B			
C200 SITE PLAN	1010A 1ST FLOOR - FINISH PLAN - SECTOR A	S105 ROOF SPANDREL FRAMING PLAN			
C201 GEOMETRIC LAYOUT	1010B 1ST FLOOR - FINISH PLAN - SECTOR B	S106.A ROOF FRAMING PLAN - SECTOR A			
C202 FRAMING & JOINT LAYOUT	1020 OVERALL 2ND FLOOR - FINISH PLAN	S106.B ROOF FRAMING PLAN - SECTOR B			
C203 GRADING PLAN	1020A 2ND FLOOR - FINISH PLAN - SECTOR A	S106.D BUILDING SECTIONS			
C300 STORM DRAINAGE LAYOUT	1020B 2ND FLOOR - FINISH PLAN - SECTOR B	S201 BUILDING SECTIONS			
C301 STORM DRAINAGE LAYOUT	1030 OVERALL 3RD FLOOR - FINISH PLAN	S202 BRACED FRAME ELEVATIONS			
C302 UTILITY LAYOUT	1030A 3RD FLOOR - FINISH PLAN - SECTOR A	S203 BRACED FRAME DETAILS			
ARCHITECTURE	1030B 3RD FLOOR - FINISH PLAN - SECTOR B	S300 FOUNDATION DETAILS			
A101 OVERALL 1ST FLOOR PLAN	1031 OVERALL 1ST FLOOR - FLOOR FINISH PLAN	S301 FOUNDATION DETAILS			
A101.A 1ST FLOOR PLAN - SECTOR A	1031A 1ST FLOOR - FLOOR FINISH PLAN - SECTOR A	S400 FRAMING DETAILS			
A101.B 1ST FLOOR PLAN - SECTOR B	1031B 1ST FLOOR - FLOOR FINISH PLAN - SECTOR B	S401 FRAMING DETAILS			
A102 OVERALL 2ND FLOOR PLAN	1032 OVERALL 2ND FLOOR - FLOOR FINISH PLAN	S402 FRAMING DETAILS			
A102.A 2ND FLOOR PLAN - SECTOR A	1032A 2ND FLOOR - FLOOR FINISH PLAN - SECTOR A	990 GENERAL NOTES AND SCHEDULE			
A102.B 2ND FLOOR PLAN - SECTOR B	1032B 2ND FLOOR - FLOOR FINISH PLAN - SECTOR B	MECHANICAL			
A103 OVERALL 3RD FLOOR PLAN	1033 OVERALL 3RD FLOOR - FLOOR FINISH PLAN	M001 GENERAL MECHANICAL NOTES & LEGEND			
A103.A 3RD FLOOR PLAN - SECTOR A	1033A 3RD FLOOR - FLOOR FINISH PLAN - SECTOR A	M100 1ST FLOOR - MECHANICAL OVERALL			
A103.B 3RD FLOOR PLAN - SECTOR B	1033B 3RD FLOOR - FLOOR FINISH PLAN - SECTOR B	M101A 1ST FLOOR - MECHANICAL - SECTOR A			
A110 ENLARGED PLUMB	1034 OVERALL 3RD FLOOR - FLOOR FINISH PLAN	M101B 1ST FLOOR - MECHANICAL - SECTOR B			
A121 ENLARGED PLAN DETAILS	1034A 3RD FLOOR - FLOOR FINISH PLAN - SECTOR A	M102 2ND FLOOR - MECHANICAL OVERALL			
A131 PLAN DETAILS	1034B 3RD FLOOR - FLOOR FINISH PLAN - SECTOR B	M103 3RD FLOOR - MECHANICAL OVERALL			
A141 OVERALL 1ST FLOOR RCP	1035 INTERIOR ELEVATIONS	M104 3RD FLOOR - MECHANICAL - SECTOR A			
A141.A 1ST FLOOR RCP - SECTOR A	1036 INTERIOR ELEVATIONS	M105 3RD FLOOR - MECHANICAL - SECTOR B			
A141.B 1ST FLOOR RCP - SECTOR B	1037 INTERIOR DETAILS	M200 MECHANICAL CENTRAL PLANT			
A142 OVERALL 2ND FLOOR RCP	1038 INTERIOR DETAILS	M201 MECHANICAL SECTIONS			
A142.A 2ND FLOOR RCP - SECTOR A	1039 INTERIOR DETAILS	M205 MECHANICAL DUCTWORK RISERS			
A142.B 2ND FLOOR RCP - SECTOR B	1040 OVERALL 1ST FLOOR MILLWORK PLAN	M207 MECHANICAL SCHEDULES			
A143 OVERALL 3RD FLOOR RCP	1041A 1ST FLOOR MILLWORK PLAN - SECTOR A	M208 MECHANICAL SCHEDULES			
A143.A 3RD FLOOR RCP - SECTOR A	1041B 1ST FLOOR MILLWORK PLAN - SECTOR B	M211 MECHANICAL SCHEDULES			
A143.B 3RD FLOOR RCP - SECTOR B	1042 OVERALL 2ND FLOOR MILLWORK PLAN	M201 MECHANICAL DETAILS			
A151 ROOF PLAN	1042A 2ND FLOOR MILLWORK PLAN - SECTOR A	PLUMBING			
A152 TYP ROOF DETAILS	1042B 2ND FLOOR MILLWORK PLAN - SECTOR B	P100 GENERAL PLUMBING NOTES & LEGEND			
A201 BUILDING ELEVATIONS	1043 OVERALL 3RD FLOOR MILLWORK PLAN	P101 OVERALL 1ST FLOOR PLAN - PLUMBING			
A201 GLAZING ELEVATIONS	1043A 3RD FLOOR MILLWORK PLAN - SECTOR A	P101A PARTIAL 1ST FLOOR PLAN - PLUMBING			
A201 BUILDING CROSS SECTIONS	1043B 3RD FLOOR MILLWORK PLAN - SECTOR B	P102 OVERALL 2ND FLOOR PLAN - PLUMBING			
A202 BUILDING LONG/SHORT SECTIONS	1044 ENLARGED MILLWORK PLANS & DETAILS	P102A PARTIAL 2ND FLOOR PLAN - PLUMBING			
A401 WALL SECTIONS	1045 ENLARGED MILLWORK PLANS & DETAILS	P102B PARTIAL 2ND FLOOR PLAN - PLUMBING			
A402 WALL SECTIONS	1046 OVERALL 1ST FLOOR FURNITURE PLAN	P103 PLUMBING DETAILS			
A403 WALL SECTIONS	1047 OVERALL 2ND FLOOR FURNITURE PLAN				
A404 WALL SECTIONS					